

## Contents

The People Who Turn Applications Into Awards	3
The Chair's Report	4
The Chief Executive's Review	5
What We Fund	6
Standard Grant Scheme	7
Capacity Building Grants	8
Partnership Drugs Initiative	9
Overseas Grants	10
Staff Matched Giving Scheme	11
More Than Just Money	12
Our History	13
Making The Journey Worthwhile	14
Looking Forward To 2008	15
Accounts	16
Awards Released In 2007	18
Your Views Count	43

## The People Who Turn Applications Into Awards

### Chair

Norman Drummond

### Vice Chair

Elaine Ross CBE

### Trustees

Sandra E Brydon  
G Martin F Cheyne *from February 2007*  
James G D Ferguson  
Bill Hope  
Christine Lenihan  
Professor Joyce Lishman  
Maria McGill  
Ian Small  
Eilidh A C Wiseman *from February 2007*

### Chief Executive

Andrew S Muirhead FCIBS MBA

### Deputy Chief Executive

Mary E Craig FCIBS

### Trust Administrator & Company Secretary

Karen L Brown MBA

### Deputy Trust Administrator

Aileen Drummond

### Administrative Assistants

Steve Falla  
Gemma Gillespie  
Kirsty Peterson

### Assessment Team

Kaylie Allen  
Susan Bell  
Louise Hannigan  
Debbie Kaney  
Sarah Littlewood  
Alex Nairn  
Ritchie Stewart  
Duncan Weir  
Connie Williamson

### Capacity Building:

Co-ordinator Geoff Weir

### Partnership Drugs Initiative:

Programme Manager Elaine Wilson  
Deputy Programme Manager Eilidh Chalmers

### Inspiring Scotland:

Head of Policy & Government Relations Helen Chambers  
Head of Investor Relations Janice Reilly (Figured Ltd)

### Performance Advisors

Susan Bell  
Louise Hannigan  
Danny Philips  
Celia Tennant

### Executive Assistant

Steve Falla

### Press & PR:

Manager Catriona Henderson  
Officer Juliet Scougall

### Enable Placement

Euan Wright

## The Chair's Report

*"What is even more encouraging is the knowledge that this high quality work is mirrored in communities all across Scotland."*



**I often encourage people to have courageous conversations, as there is tremendous benefit to be gained from getting past the often trivial platitudes of casual conversation. It is heartening that 2007 has been a year where the Foundation has had many significant and challenging conversations in developing its existing grant-making work.**

As part of our Annual Away Day in June the Trustees had the privilege of seeing at first hand the inspirational work of some of the charities which we fund. All the Trustees and the Foundation's Foundation (our Staff) visited projects and were greatly uplifted by the tremendous commitment there is to improving people's lives. What is even more encouraging is the knowledge that this high quality work is mirrored in communities all across Scotland. We would not be able to fund charities without our income from Lloyds TSB Group and as always we greatly appreciate everything their hard work enables.

Norman Drummond  
Chair

This Foundation continues to be true to the legacy of The Revd Henry Duncan, who founded the Trustee Savings Bank movement and whose enlightened social conscience the Lloyds TSB Foundations strive to emulate. In this spirit the Foundation continues imaginatively to deliver its well established standard grant scheme, capacity building programme, partnership drugs initiative, overseas awards and matched giving scheme for the charitable efforts of staff of the Lloyds TSB Group. However, in 2007 the Foundation in Scotland has also looked at what it might yet become or do, an attribute of which I am sure Henry Duncan would have approved.

This sense of challenge has allowed us to develop Inspiring Scotland, a venture philanthropy fund led by this Foundation which will be launched in early 2008. The result of many courageous conversations with Government, individuals and other grant-making trusts to build investment in this fund, we believe Inspiring Scotland will deliver real and lasting change for the voluntary sector in Scotland.



## The Chief Executive's Review

*"Our aim is to grow in effectiveness and in doing so remain at the heart of funding Scotland's charities."*

**As I reflect on 2007 and consider the achievements of the Foundation, I think of the many thousands of staff and volunteers in Scotland and beyond who convert our support into life changing experiences for those in need. This inspires the staff of the Foundation to do more and be a constructive ally to the sector.**

This has been a year of considerable development, with the creation of Inspiring Scotland which will invest in charities facing up to some of Scotland's most pressing challenges. Partnership is key, and the Foundation is delighted to have played a leading role in establishing this strategic programme to provide long term funding and secure real and lasting social returns.

Alongside this the core programmes of the Foundation grow stronger. The Standard Grant Scheme continues to be central to our grant-making, embracing the diversity of the charitable sector. Our Trustees remain committed to enabling access for all, and our local funding events mean we reach many projects we may otherwise have missed.

Demand also remains high for the valuable organisational development we fund through the Capacity Building Programme.

The Partnership Drugs Initiative goes from strength to strength and we are delighted it has become an integral part of the range of positive endeavours in the field of drugs and alcohol work.

I have been fortunate to visit a number of the projects funded through our Overseas Programme. The very positive outcomes being achieved owe much to the excellent work of the Scottish based charities through which we channel that support.

More details on what we delivered through all these award programmes follows.

We look forward to 2008 with great excitement. It will see the launch of Inspiring Scotland and a review of the criteria, priorities and principles which guide our work, along with key events such as the Annual Forum. Our aim is to grow in effectiveness and in doing so remain at the heart of funding Scotland's charities.

Andrew Muirhead  
Chief Executive



## What We Fund

“Lloyds TSB Foundation for Scotland funds charities registered in Scotland whose work is focused on improving quality of life and creating equality of opportunity for people in Scotland. This applies particularly to those who are disadvantaged or marginalised.”



Edzell Pre-school Playgroup

Every three years we consult with Scottish charities to make sure we are still funding work of the most relevance to communities across Scotland, and we'll be doing this in 2008.

We have a number of award programmes each aimed at meeting a different need:

- Our standard grant scheme funds a wide range of work and is targeted at small, grassroots charities.
- Capacity building grants help charities develop themselves by paying for support from independent advisors.
- The partnership drugs initiative focuses on work with children and young people on issues around substance misuse.
- Overseas grants fund work in fragile overseas communities that is managed by Scottish charities.
- Employees of Lloyds TSB Group can apply for matched funding for their own fundraising or volunteering work.

More detail on what we will or won't fund is in our criteria, priorities and principles leaflets. These are on our website, [www.ltsbfoundationforscotland.org.uk](http://www.ltsbfoundationforscotland.org.uk), or you can call us on 0870 902 1201 and we'll send you copies.



Living Memory Association



Stirling Carers Centre



Loanhead Community Learning Centre

## Standard Grant Scheme

This award programme funds work led by registered charities in local communities across Scotland. Awards can be for anything from setting up new services to improving facilities or paying salaries, and can be for up to three years. Have a look on pages 19 to 33 to see what we funded in 2007, and at our criteria, priorities and principles leaflet for more information on what we will and won't fund.

Loanhead Community Learning Centre runs a whole range of services, including a café, community garden, after school care club, nursery, special needs groups and youth clubs. It was awarded £32,100 over three years to support the salary of the development worker, bringing the total it has been awarded to over £60,000. Derek Cummings, Director, said: "Over 1,300 people use our centre every week. It's a place where there is space for people of all ages to meet and really engage in community activities. This three year award provides us with much needed security to allow us to continue supporting the local community. We've had funding through the standard grant scheme since 2002, and this has helped us to grow and deliver services that really meet the needs of local people."

There are six rounds of awards each year, so with a deadline every two months you can choose when in the year suits you to apply. However, we always receive applications for far more funding than we are able to provide, and so aren't able to say yes to everyone. To support you to complete your application we hold funding surgeries across Scotland, where you can speak to one of our Assessors. Alternatively, we are also happy to speak to you by phone. If you'd like to make a surgery appointment or ask for advice or an application pack, just call us on 0870 902 1201.

>£4,392k

Total grants awarded

53%

Successful applications

493

Charities supported including

128

Multi-year awards totalling

>£3,267k



Interest Link Borders



Simeon Care for the Elderly



Shetland Community Drugs team

## Partnership Drugs Initiative

*“By working with young people in their own environment it is much more likely they will engage with us, and that is the first step in helping them make informed decisions about drugs and alcohol.”*

## Capacity Building Grants

**Often charities put all their energy and money into delivering their core services, leaving no time or resources to develop themselves. We know it is very hard to find support for this type of work, and our capacity building grants are designed to fill this gap.**

These awards pay for your organisation to have dedicated time with an experienced independent advisor. Key areas such as governance, financial management, resource and financial planning, information technology, fundraising, communications, strategic development and staff development are addressed. Crucially, the first part of an award will pay for a review of your organisation so your management committee can really understand what is working and what you might want to change. You can apply for a capacity building grant at any time.

Interest Link Borders improves the quality of life for adults with learning difficulties throughout the Scottish Borders by providing a befriending service. In 2007 it received a capacity building grant of £5,392 which paid for a review of the organisation and ten days consultancy on marketing and fundraising. Andrew Findlay, the Co-ordinator, said: “With over 250 people registered for our services, it is vital that we raise enough money to meet the needs of these local people. Working with an independent advisor on improving our fundraising and marketing strategy has given us a better understanding of how we can benefit from taking a more strategic approach in these areas. We’ve also taken away some great practical ideas that are already making a difference to us and the people who we support.”

>£400k

Total grants awarded

89%

Successful applications

76

Charities supported

>£1,545k

Total grants awarded

61%

Successful applications

19

Charities supported

**Funded by the Foundation and the Scottish Government, this programme supports voluntary sector work targeted at:**

- Children and young people in families in which parents misuse drugs or alcohol.
- Pre-teen children who are at higher risk of developing problems with substance misuse.
- Young people who are developing or who have established problems with substance misuse.

Partnership working is a key part of this programme, and every group that receives funding works with their local Alcohol and Drug Action Teams and statutory groups. To make sure projects aren't completely reliant on our funding, all the groups which receive awards must identify match funding for at least 50% of the project costs from another funding route.

As the aim is to fund work which will help young people, a group of young people is involved in assessing applications and helping us understand what will actually work. Applications are also considered by a steering group which is made up of people with a wide range of relevant expertise. There are two rounds of awards each year.

As part of an award, organisations are required to attend training on evaluation. This is designed to help projects demonstrate the impact of their work and the positive difference it makes to the children and young people involved, and in turn this is fed back to Government and policy makers.

In 2007, Shetland Community Drugs Team was awarded £56,100 over three years to support the salary and running costs for the young people's service. Ms Gill Hession, Manager, said: “This is our first award from the Foundation and it will help us reach young people before they develop serious problems with drug and alcohol misuse. By working with young people in their own environment it is much more likely they will engage with us, and that is the first step in helping them make informed decisions about drugs and alcohol. Everyone has to make their own choices, so this isn't about telling people what to do, it's about helping them understand the impact of drugs and alcohol on themselves and their families.”

>£399k

Total grants awarded

34%

Successful applications

22

Charities supported

## Overseas Grants



Children in front of their new classroom built by the Ribban Children's Trust

**Our overseas awards are open to registered Scottish charities managing work in fragile overseas communities.**

The Foundation is the largest independent funder of this work, and makes awards which:

- Fund projects which build the capacity of organisations overseas, and develop their ability to advocate.
- Pay costs associated with running overseas volunteering programmes which focus on the development and transfer of skills.
- Support the initiation or continuation of sustainable indigenous projects overseas.
- Pay costs associated with bringing people to Scotland for training, development and study leading to sustainable development.

Sarah Sieley, who grew up in Kenya and set up the Ribban Children's Trust to help children there have a basic education, said: "Our award of £7,408 will allow us to build four new classrooms, meaning that each class in the two schools we support will have a permanent room. Since we began developing these schools, the parents are much more involved in their children's education and the local communities have started using them for meetings. There are almost 350 children aged 3-14 in each school, and the children have much greater opportunities if they have had even a basic education. We are also starting to see more children from these schools passing the highly competitive entrance exams for secondary school places, and pressure is being put on politicians to help other schools reach the same standards."

There is one round of overseas awards each year. In 2008 the deadline for submissions was 14th April and decisions on who will receive funding will be made in August.



The Prince and Princess of Wales Hospice



From left to right: Janell Kelly, her mum and sister at the end of their 5K event

## Staff Matched Giving Scheme

>£181k

Total grants awarded

93%

Successful applications

521

Charities supported

**In 2007 we increased the amount Lloyds TSB Group staff could apply for to match their fundraising or voluntary work for charities to up to £500 a year. This scheme greatly increases the amount of money going to the charities they support, and encourages staff to get involved with charities in their own areas of Scotland.**

Whether it was volunteering for Brownies, Scouts, The Girls' or Boys' Brigade, after school clubs or local charity shops, in 2007 staff gave 5,919 hrs of their time to charities. Fundraising events included everything from asking friends to donate to charity rather than buy birthday presents, running a cake and candy stall, abseiling off the Falkirk Wheel, holding a belly dancing event and climbing Mount Kilimanjaro. From thrill seeking to keeping their feet firmly on the ground, hundreds of staff found a way to take part and raise money for a charity of their choice.

Janell Kelly works with Lloyds TSB Scotland and claimed £500 for The Prince and Princess of Wales Hospice for taking part in the Jog Scotland 5K event. Janell said: "The Hospice provides respite care for terminally patients and support for this families and carers. I choose this charity as my mother's childhood friend was looked after by the hospice and we wanted to do something to support this cause. My mother, sister and myself all took part. This was the first time we had done anything like this as a family and it was really good to get together as a team. I have claimed matched giving now for the past few years and think it's great how charities can get extra financial benefit through this scheme."

A full list of the charities who have benefited through this scheme are given on pages 40 to 42. You can find out more about the staff matched giving scheme at [www.itsbmgs.org](http://www.itsbmgs.org).



Children in Peru supported by The Vine Trust

*"Our award of £7,408 will allow us to build four new classrooms, meaning that each class in the two schools we support will have a permanent room."*



The Foundation's Annual Dinner



Sir Tom Farmer CBE speaking at the Foundation's Annual Forum



The Foundation's Annual Forum



## More Than Just Money

We are interested in helping in other ways than providing funding, and these are some of the things we do:

### Application support:

- One-to-one advice on applications is available at funding surgeries throughout Scotland. The full list of dates and locations is on our website [www.ltsbfoundationforscotland.org.uk](http://www.ltsbfoundationforscotland.org.uk).
- If you can't attend a funding surgery, we'll provide pre-submission advice by phone.
- We can also help with your workshops, seminars and funding forums.
- Our website provides guidance and information.

### Events:

- Our annual forum is open to everyone who has applied to the Foundation in the last year – whether successful or not – and provides a great opportunity to meet our staff and Trustees and ask us questions. It is also a great place to network with other people in the sector.
- We have an annual dinner to thank people in the voluntary sector for their hard work and commitment.
- All the Trustees and staff have an away day, and this often includes visiting projects we fund to see first hand the difference the money is making.

- We run workshops on evaluation and networking for groups funded through our Partnership Drugs Initiative.

### Communication:

- To make sure we understand how well we are meeting the needs of the voluntary sector, we consult them on all areas of our work.
- Groups who have received awards can get advice and help on getting media coverage and our ISDN equipment is available to help groups deliver high quality media interviews.
- The Partnership Drugs Initiative newsletter shares information and ideas.
- We are always happy to answer queries by phone.
- You are welcome to use the meeting rooms and presentation equipment in our office free of charge.

If you'd like more information about any of these, or if there's something else you think we can do to help, call and have a chat on 0870 902 1201.

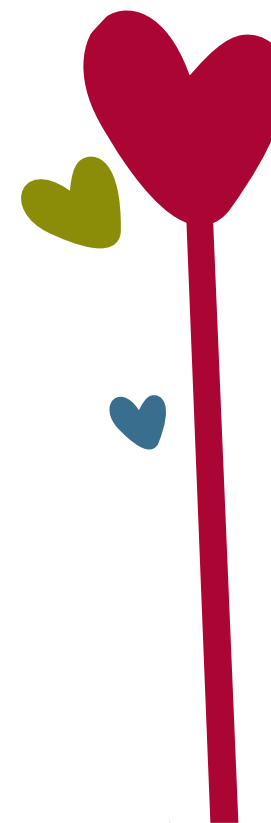
## Our History

**Lloyds TSB Foundation for Scotland is one of four independent charitable trusts distributing 1% of Lloyds TSB Group's pre-tax profits. The Foundation for Scotland receives 19.46% of this amount.**

The Foundation began life in 1985, and the merger between TSB Group and Lloyds Bank in 1995 increased the Foundation's income significantly. The Foundation is now the largest independent Scottish grant-making trust, working to support hundreds of Scottish charities each year. Aiming to improve quality of life and create equality

of opportunity for people in Scotland, especially those who are disadvantaged or marginalised, the Foundation has always supported local community groups and grassroots charities. It is dedicated to being approachable and working with the voluntary sector to ensure the continued relevance of its funding programmes.

The Foundation is governed by a Board of Trustees who meet six times a year to consider applications and grant funds. Their care and professionalism makes a huge difference to communities across Scotland. The work carried out by the Foundation and the level of awards it makes really does mean it is at the heart of funding Scotland's charities.



*"We are dedicated to being approachable and working with the voluntary sector to ensure the continued relevance of our funding programmes."*



Lloyds TSB Scotland's cricket sponsorship



Susan Rice, Chief Executive of Lloyds TSB Scotland, far left, and Norman Drummond, Chair of Lloyds TSB Foundation for Scotland, far right, present a cheque to The Venture Trust

## Looking Forward To 2008

*Our aim is to move towards measuring outcomes of the work we fund, so we can understand more about the impact of our funding.*



## Making The Journey Worthwhile...

**As one of Scotland's largest employers, Lloyds TSB Scotland is dedicated to playing its part in strengthening the economic and social base of the country. In 2010, Lloyds TSB Scotland will celebrate its 200th anniversary within the International Savings Bank movement, which dates back to 1810 when the Reverend Henry Duncan of Ruthwell, Dumfriesshire, set up a bank to help his poorest parishioners save for times of hardship.**

In March 2007, Lloyds TSB strengthened its brand message, committing to supporting customers 'for the Journey'. This commitment to recognising that people in Scotland undergo different journeys throughout their lives, is demonstrated through the Bank's strong focus on community regeneration, the arts, sports and of course, charitable giving.

Financial inclusion is important to the Bank's strategy and is demonstrated in its partnership with Young Scot, the youth information agency for Scotland. Lloyds TSB Scotland believes in the power of young people to make a difference to the future of Scotland.

In 2007, this partnership made important progress in the world of financial capability by listening to feedback from young people on

how to tailor financial services to meet their needs. From this research, Lloyds TSB Scotland became the first bank to accept the Young Scot membership card as account opening ID. Their longer term aim is to simplify the literature that accompanies financial services and further adapt product ranges. This work, coupled with products and services tailored to welcome foreign national customers to Scotland, contributed to the Bank's overall strategic vision to meet the needs of its ever-broadening range of customers.

Corporate Social Responsibility remains at the heart of Lloyds TSB Scotland's operations, which in turn generate economic benefits for the people and the communities where it does business. It is one of the country's leading corporate sponsors. In 2007, the Bank sponsored Young Scot, BAFTA Scotland, the Edinburgh International Festival, Cricket Scotland and other events and organisations. Lloyds TSB is also the official banking and insurance partner of the London 2012 Olympic and Paralympic Games. Furthermore, a number of the Bank's senior managers sit on the boards of charities including Sightsavers International Scotland and Barnardo's Scotland.

Staff across all parts of Lloyds TSB Group in Scotland – Lloyds TSB Scotland, Scottish Widows, Black Horse Finance and Telephone Banking – dedicate a tremendous amount of time and money to many charitable organisations. In 2007, Lloyds TSB Foundation for Scotland made 521 matched-giving awards to staff-selected charities, totalling over £181,000 for staff contribution, including nearly 6000 hours of voluntary work.



Youth Highland

In early 2008 we will launch a new, long term model of funding for charities, building investment from Government, individuals, business and other grant-making trusts. Called Inspiring Scotland, its first investment will be targeted at work with 14 to 19 year olds who are struggling to make a successful transition from school to training, employment or further education.

We'll be reviewing the criteria and priorities for our grant-making in 2009-2011. As always, we'll make sure we involve the voluntary sector in this so they can help shape where our funding is directed.

The Partnership Drugs Initiative will be reviewing its long term strategy.

The information we ask for on our standard grant application form will be reviewed. Our aim is to move towards measuring outcomes of the work we fund, so we can understand more about the impact of our funding.

The first newsletter covering the work of the Foundation will be launched, building on what we've learnt from the Partnership Drugs Initiative newsletter.

## Annual Accounts 2007

These summarised accounts may not contain sufficient information to allow a full understanding of the financial affairs of the Foundation. For further information the full annual accounts, auditor's report on those accounts, and the Trustees report should be consulted. Copies can be obtained by contacting the Foundation office on 0870 902 1201.

The full accounts were approved on 7th February 2008 and have been submitted to the Registrar of Companies.



### Statement of Financial Activities incorporating an Income & Expenditure Account for year ended 31 December 2007

	12 months to 31 December 2007 £'000	12 months to 31 December 2006 £'000
<b>INCOMING RESOURCES</b>		
<b>Incoming resources from generated funds</b>		
Voluntary income:		
Laidlaw Youth Project	–	203
The Scottish Government	1,341	788
Investment income:		
Lloyds TSB Group plc Covenant	7,226	6,074
Interest	523	403
Other incoming resources	6	21
<b>Total incoming resources</b>	<b>9,096</b>	<b>8,119</b>
<b>RESOURCES EXPENDED</b>		
Charitable activities	9,410	8,225
Governance costs	22	24
<b>Total resources expended</b>	<b>9,432</b>	<b>8,249</b>
<b>Net (outgoing) resources before transfers</b>	<b>(336)</b>	<b>(130)</b>
Gross transfers between funds	–	–
Total funds brought forward	3,720	3,850
<b>Total funds carried forward</b>	<b>3,384</b>	<b>3,720</b>

### Balance sheet for year ended 31 December 2007

	2007 £'000	2006 £'000
<b>FIXED ASSETS</b>		
Tangible assets	179	196
Investments	–	–
<b>Total fixed assets</b>	<b>179</b>	<b>196</b>
<b>CURRENT ASSETS</b>		
Debtors	48	40
Cash at bank	5,713	5,560
<b>Total current assets</b>	<b>5,761</b>	<b>5,600</b>
<b>LIABILITIES</b>		
Grants awarded and payable	2,540	2,060
Accruals	16	16
<b>Total liabilities</b>	<b>2,556</b>	<b>2,076</b>
<b>NET ASSETS</b>	<b>3,384</b>	<b>3,720</b>
<b>The funds of the charity:</b>		
Restricted funds	1,571	1,722
Unrestricted funds		
- General fund	1,196	1,319
- Designated fund	617	679
<b>Total unrestricted funds</b>	<b>1,813</b>	<b>1,998</b>
<b>Total charity funds</b>	<b>3,384</b>	<b>3,720</b>

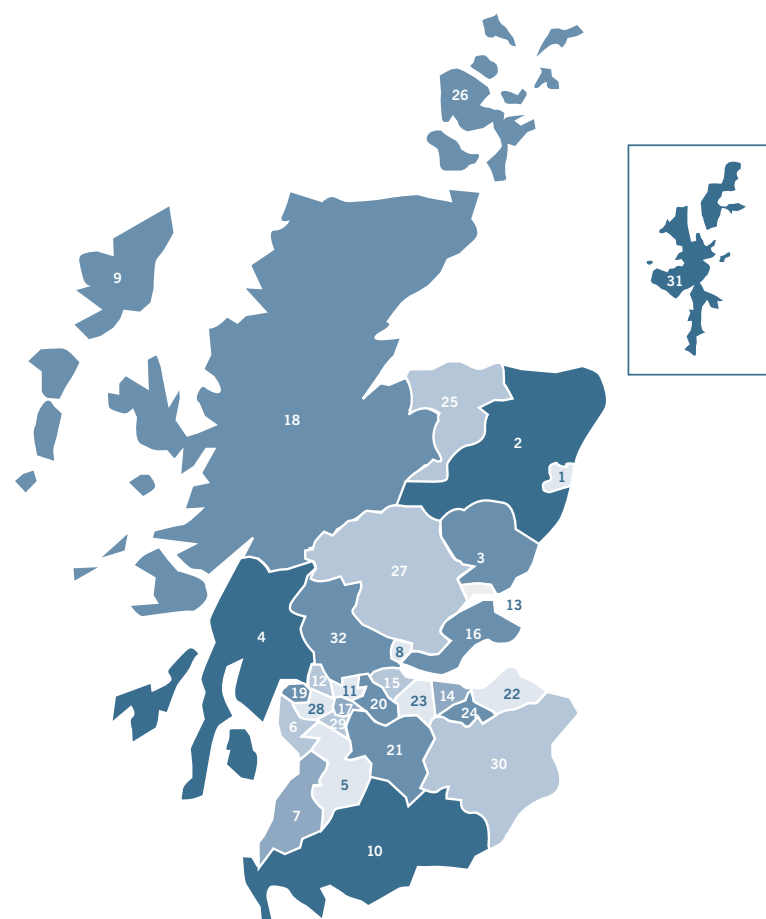
## Awards Released In 2007

Over the next few pages, we have detailed in full the awards paid out to charities during 2007.

Please note that these awards will not necessarily have been granted by the Trustees in 2007, and may relate to awards made in previous years. This is because the Foundation often makes awards with conditions attached and will not release monies until the conditions have been met.

Commitments made during the year which have not yet paid out have not been included in this list. This is reconciled for your information below:

	£'000
Capacity Building Grants	400
Inspiring Scotland	48
Overseas Grants	438
Partnership Drugs Initiative	834
Staff Matched Giving Scheme	182
Standard Grant Scheme	4,245
<b>TOTAL AWARDS PAID 2007</b>	<b>6,147</b>
Conditional/multi-year awards committed not yet released	2,140
Awards not taken up	(124)
<b>GRANTS APPROVED 2007</b>	<b>8,163</b>



Index

- |                        |                      |
|------------------------|----------------------|
| 01 City of Aberdeen    | 17 City of Glasgow   |
| 02 Aberdeenshire       | 18 The Highlands     |
| 03 Angus               | 19 Inverclyde        |
| 04 Argyll and Bute     | 20 North Lanarkshire |
| 05 East Ayrshire       | 21 South Lanarkshire |
| 06 North Ayrshire      | 22 East Lothian      |
| 07 South Ayrshire      | 23 West Lothian      |
| 08 Clackmannanshire    | 24 Midlothian        |
| 09 Western Isles       | 25 Moray             |
| 10 Dumfries & Galloway | 26 Orkney            |
| 11 East Dunbartonshire | 27 Perth & Kinross   |
| 12 West Dunbartonshire | 28 Renfrewshire      |
| 13 City of Dundee      | 29 East Renfrewshire |
| 14 City of Edinburgh   | 30 Scottish Borders  |
| 15 Falkirk             | 31 Shetland          |
| 16 Fife                | 32 Stirling          |
|                        | 33 Scotland-wide     |

## Standard Grant Scheme

### City of Aberdeen

#### Aberdeen Citizens Advice Bureau

Towards the salary of the Volunteer Support Worker to support young volunteers.

£794

#### Aberdeen Cyrenians Limited

Towards the salary of the Project Manager of the Cygnet Project.

£15,000

#### Aberdeen Day Project

Towards the salary of the General Manager.

£3,100

#### Aberdeen Elderly Chinese Association

Towards the salary of the Development Worker.

£7,500

#### Aberdeen International Centre

Towards the salary and project costs of the Ethnic Minority Project Co-ordinator.

£7,607

#### Befriend A Child Scheme

Towards training and administration costs.

£8,573

#### Bridge of Don Sea Cadets Unit No 6

For six training kayaks, a trailer and equipment.

£2,500

#### Middlefield Community Project

Towards the salary of a Youth Worker for the youth flat for one year only.

£7,089

#### Rape & Abuse Support

Towards the rent of the premises.

£5,396

#### Sense Scotland

Towards the costs of the visual arts programme in Aberdeen and Aberdeenshire, closing the appeal in year one.

£14,390

### Aberdeenshire

#### 1st Banchory Scout Group

Towards the external ramps.

£6,800

#### Aberdeen Presbytery Counselling Service

Towards the salary of the part-time Deputy Co-ordinator, conditional upon written confirmation that the appointment has been made.

£7,000

#### Ballater (RD) Ltd

Towards the community bus, conditional upon written confirmation that the order has been placed and that the new vehicle will be fitted with 3-point seatbelts on all seats.

£5,000

#### Brighter Horizons

For furniture and equipment for the office and support facility.

£2,500

#### Busy Bees Playgroup

Towards the salary of the Playworker to assist children with additional needs, and adjustable furniture and a ramp.

£2,391

#### Cornhill Day Club

Towards the costs of bus trips for the elderly.

£2,500

#### Disablement Income Group Scotland

Towards the insurance costs of the self-drive vehicles.

£2,500

### Grampian Cardiac Rehabilitation Association Ltd

Towards training 12 new instructors and the start-up and related costs for eight new classes in Moray and rural Aberdeenshire.

£10,600

### Home-Start Garrioch

Towards the salary of the Administration Assistant.

£7,450

### Home-Start Kincardine

Towards the salary of the Senior Co-ordinator for one year only.

£8,400

### Inverurie West Parish Church

Towards the purchase of a dishwasher, two freezers, and a chilled counter.

£7,567

### Kincardine & Deeside Befriending

To cover the salaries and some running costs, closing the appeal.

£7,450

### People First (Fraserburgh)

To fund the Self-Advocacy Training Project, closing the appeal.

£7,253

### Power House Kids Club Ministries Scotland

Towards the weekly club expenses.

£5,232

### The Silver Circle

Towards the running costs of the day centre.

£2,500

### Simeon Care for the Elderly Ltd

Towards the installation and decoration of the shower and bathroom.

£2,500

### Angus

#### Angus Carers Association

Towards the salary of the Volunteer Development Officer for the Count Me In Young Project for young sibling carers.

£11,111

#### Brechin Youth Project

Towards the salary of one Youth Worker for 12 hours a week.

£6,200

#### Dorward House Montrose Scheme 1934

To furnish two bedrooms in the Respite Unit and to purchase two profiling beds and a mobile hoist.

£8,206

#### Eassie & Nevay Community Association

Towards the crockery, cutlery and kitchen equipment.

£1,814

#### Edzell Pre School Playgroup

Towards the salary of the Playleaders, closing the appeal.

£1,605

#### Glens Out of School Club

Towards the Playleader's salary and the transport of the out of school club.

£2,400

#### Kirriemuir Day Care Ltd

Towards the salary of the Gardener for one year only.

£2,500

#### Oyster Trust

Towards the salary of the Youth Worker/Bar Manager.

£6,000

## Standard Grant Scheme continued

<b>Argyll &amp; Bute</b>		<b>East Ayrshire</b>		<b>Clackmannanshire</b>		<b>Kirkcudbright Swimming Pool</b>	£7,500
<b>Achievement Bute</b>	£8,868	<b>102nd Ayrshire (Beith) Scout Group</b>	£2,500	<b>Community House Ltd</b>	£6,500	Towards the salary of the Development Manager.	
To cover the rent, office utilities and training costs for staff and volunteers.		Towards the cost of tents and cooking equipment.		Towards the salary of the Project Co-ordinator.		<b>Locharbriggs &amp; Heathhall Mother &amp; Toddler Group</b>	£2,500
<b>Argyll Couple Counselling</b>	£2,500	<b>Bellsbank Women's Project</b>	£5,751	<b>Play Alloa</b>	£4,934	Towards the cost of new physical education, safety, arts and social care learning equipment.	
Towards the volunteers' travelling expenses and rental of rooms for the counselling sessions.		Towards the cost of increasing staff hours and extending the activity programme, closing the appeal.		To cover the venue costs and support for three qualified staff for the Saturday Youth Club.		<b>Upper Annandale Youth Support Group</b>	£7,000
<b>Autism Argyll</b>	£5,700	<b>Cumnock Osteoporosis Support Group</b>	£2,500	<b>Reachout with Arts in Mind</b>	£14,941	Towards the salary of the full-time Project Co-ordinator.	
To cover the speaker's fees and expenses for eight training events.		Towards the cost of instructor fees for aqua aerobics, chair aerobics and transport to the exercise classes.		Towards the salary of the Fundraiser Development Worker, closing the appeal.		<b>East Dunbartonshire</b>	
<b>Cowal Community Care Forum</b>	£7,782	<b>East Ayrshire Carers Centre</b>	£10,000	<b>Tillicoultry Out of School Club</b>	£1,720	<b>Volunteer Centre -</b>	
To cover the salary of the part-time Communications Officer's post, conditional upon written confirmation that the appointment has been made.		Towards the young carers' weekly activities.		To increase the weekly hours of a playworker and to purchase arts and crafts materials for the activities.		<b>East Dunbartonshire Befriending Project</b>	£7,100
<b>Crossroads (North Argyll) Care Attendant Scheme</b>	£5,000	<b>Hallhouse Care Home Residents Social Committee</b>	£3,765			Towards the salary of the Befriending Service Manager.	
Towards the costs of training four members of staff to national standards SVQ Level 2.		To cover the cost of supply and installation of 26 planters, plants and water feature in the sensory garden.		<b>Dumfries &amp; Galloway</b>		<b>West Dunbartonshire</b>	
<b>Family Mediation Argyll &amp; Bute</b>	£9,000	<b>Kilmarnock Pipe band</b>	£2,440	<b>Broken Pencils</b>	£1,866	<b>Able2Sail Trust</b>	£6,000
To cover the rental of new premises.		To cover the cost of bagpipes, extending blowpipes for young members of the band that do not have the means to purchase their own instrument, and hall lets for the tuition.		To cover the cost of venue hire and transport for group members over one year.		To cover the cost of 18 one day sails including boat hire and skipper to support the volunteers, and provide skills training to 72 people with a disability and their carers.	
<b>Home-Start Lorn</b>	£5,100	<b>Lighthouse Foundation</b>	£8,572	<b>Creetown Initiative Ltd</b>	£8,500	<b>Knowetop Community Farm Project</b>	£8,000
Towards the Co-ordinator's salary.		Towards the salary of the STOP Training Co-ordinator.		Towards the salary of the Project Worker over one year only.		Towards the salary of the Project Co-ordinator.	
<b>Home-Start Mid Argyll, Jura, Islay &amp; Kintyre</b>	£8,000	<b>Stuff for Kids &amp; Youth Project</b>	£8,180	<b>The Crichton Foundation</b>	£100,000	<b>St Margaret of Scotland Hospice</b>	£12,500
Towards the salary of the Senior Co-ordinator.		Towards the salary of the part-time Project Worker.		Towards the Reading Room and Research Centre.		Towards the cost of five shower rooms in the new build Older Adult Unit for patients with complex medical and nursing needs.	
<b>Islay &amp; Jura Community Enterprises Ltd</b>	£4,100	<b>North Ayrshire</b>		<b>Dumfries &amp; Galloway Care Trust</b>	£5,500	<b>Tullochan Trust</b>	£7,000
To support the costs of providing transport to enable the target groups to attend the activities at the MacTaggart Community and Leisure Centre.		<b>Broomlands &amp; Bourtreehill Baptist Church</b>	£6,000	Towards the cost of a replacement minibus for the Forestry & Gardening Project for adults with learning disabilities.		Towards the salary of the part-time Development Manager.	
<b>Islay &amp; Jura Toy Library</b>	£3,660	<b>Community Housing Advocacy Project</b>	£4,656	<b>Dumfries &amp; Galloway Elderly Forum</b>	£12,000	<b>West Dunbartonshire Council for Voluntary Service</b>	£9,917
Towards the salary of the part-time Co-ordinator.		Towards the cost of a Sessional Worker and administration support over three years, plus one-off purchase of a laptop to enable the homelessness prevention project to be delivered to vulnerable young people in a community setting.		Towards the salary of the Development Manager over one year only.		Towards the salary of the Finance Officer.	
<b>Lorn Counselling Service</b>	£11,793	<b>South Ayrshire</b>		<b>Eskdalemuir Ex-Servicemen's Public Hall</b>	£2,000	<b>City of Dundee</b>	
Towards the salary of the Co-ordinator.		<b>Ayr Fabb Club</b>	£2,430	Towards the cost of refurbishing the outdoor area surrounding the hall to improve access.		<b>2450 Dudhope Squadron Air Training Corps</b>	£2,053
<b>Lorn Toy Library</b>	£3,416	Towards the cost of weekly transport to the Club & outings.		<b>The Food Train</b>	£5,710	To purchase a laptop computer and projection equipment.	
To cover the salary of the Co-ordinator.		<b>Ayr Shopmobility Ltd</b>	£8,000	Towards the cost of a new vehicle serving 80 vulnerable people in the Stewartry area.		<b>50+ Elderly and Disabled Club</b>	£1,250
<b>Mid Argyll Friends of Arms</b>	£10,436	Towards the salary of the full-time Service Manager.		<b>Galloway Eco-Health Project</b>	£8,719	For two bus trips, including bus hire, entrance fees and refreshments.	
Towards the salary of the Co-ordinator.		<b>Headway Ayrshire</b>	£7,800	Towards the salary of the full-time Development Officer.		<b>The Brae RDA Partnership</b>	£12,650
<b>No 480 Campbeltown SCC</b>	£949	Towards the salary of a Community Support Worker.		<b>Gilnockie Public Hall</b>	£5,000	Towards the salary of the Centre Manager for one year only.	
Towards the purchase of a Pioneer 10 Rowing Boat.		<b>Opportunities in Retirement - Ayr</b>	£7,650	Towards the upgrade of the hall, including improved access and toilet facilities.		<b>Dundee Community Language Advisory Group</b>	£4,750
<b>North Argyll Volunteer Car Scheme</b>	£11,161	Towards the cost of venue hire for 25 interest groups for elderly people operating regularly throughout the year.		<b>Glenkens Community &amp; Arts Trust</b>	£7,542	Towards five sessional teacher's salaries.	
Towards the salary of the part-time Co-ordinator.		<b>South Ayrshire Nightstop</b>	£4,850	Towards the cost of furniture and equipment, including installation of an induction loop system in the new multi-purpose community centre.		<b>Dundee International Women's Centre</b>	£7,704
<b>Oban &amp; Lorn Riding for the Disabled</b>	£9,984	Towards the salary of the Project Development Worker.		<b>Gophers</b>	£2,500	To increase the hours of the Project Worker to 20 hours per week.	
Towards the salary of the Administrator.		<b>Symington Community Projects Ltd</b>	£2,211	Towards the volunteer/carer expenses, social activities and travel costs.		<b>Eighteen &amp; Under</b>	£5,753
<b>Oban Youth &amp; Community Association</b>	£5,000	To cover the cost of 10 thermostat control heaters including installation in the new annex of the community hall.		<b>Home-Start Wigtownshire</b>	£4,656	To fund the project for LGBT young people.	
To carry out roof and gutter repairs.		<b>TS Mountbatten Sea Cadets Unit No 17 - Ayr</b>	£2,831	For expenses and training costs of volunteers and staff, closing the appeal.		<b>Food on Friday at Douglas Church Association</b>	£8,500
<b>Oban Youth Cafe Project Ltd</b>	£7,000	Towards the cost of overheads for the Unit's premises over one year only.				Towards the salary of the Cafe Manager.	
To cover the rent of the cafe premises.						<b>Hot Chocolate Trust</b>	£8,304
<b>Strachur Memorial Hall Committee</b>	£7,604					Towards the salary of the Youth Development Worker.	
Towards the replacement of the original hall.							
<b>Tayvallich Village Hall Committee</b>	£6,788						
To cover the floodlighting of the court.							

## Standard Grant Scheme continued

<b>The Inclusion Group (Dundee)</b> Towards the salary of the Manager.	£7,500	<b>Down's Syndrome Scotland (Edinburgh &amp; Lothian Branch)</b> To support the delivery of the ABC Groups for the Edinburgh and Lothian Branch.	£3,826	<b>Multi Cultural Family Base</b> Towards the salary of the part-time Art Therapist and the costs of art and play materials, conditional upon written confirmation that the appointment has been made.	£7,597	<b>St George's West Church Edinburgh</b> Towards the salary of the Volunteer Co-ordinator, conditional upon written confirmation that the appointment has been made.	£10,000
<b>Parent to Parent Tayside</b> Towards the increase in hours for the Family Worker from 20 hours to 35 hours per week.	£8,287	<b>Drylaw Parish Church</b> To equip and fully furnish the community internet café.	£11,759	<b>Nisus Scotland</b> Towards the salaries of the Communications and Employability Tutors.	£9,338	<b>Stroke Unit Support</b> To provide 78 hours of aromatherapy over six months.	£2,340
<b>Relate Tayside</b> Towards the salary of the Manager, conditional upon written confirmation that the appointment has been made.	£10,000	<b>Dunedin School</b> To cover the salary of the part-time Administrator, closing the appeal.	£7,359	<b>North Edinburgh Dementia Care</b> Towards the salary of the Volunteer Co-ordinator, closing the appeal in year one.	£9,590	<b>Venture Scotland</b> Towards the salary of the Finance and Administration Officer.	£8,000
<b>Showcase the Street</b> To support the rental cost of the new premises, conditional upon written confirmation that the formal lease has been signed.	£6,000	<b>Edinburgh City Youth Cafe</b> Towards the salary of the part-time Cultural Youth Worker, activity costs and leaflet publication costs, conditional upon written confirmation that the appointment has been made.	£8,672	<b>Open Door Edinburgh</b> Towards the salary of the Assistant Manager/Daycare Co-ordinator.	£8,000	<b>VOCAL - Voice of Carers Across Lothian</b> Towards the salary of the Co-ordinator of Carer Counselling and costs of Groupwork.	£10,000
<b>Starter Packs Dundee</b> To cover the Administrator's salary.	£7,638	<b>Edinburgh Women's Rape &amp; Sexual Abuse Centre</b> Towards the salary of the Training and Support Worker.	£10,000	<b>Pilton Equalities Project</b> Towards the salary of the Older People's Literacy Worker, closing the appeal.	£10,000	<b>Waverley Care Trust</b> Towards the salary of the non-denominational Chaplain who provides holistic support.	£8,500
<b>City of Edinburgh</b>		<b>Eric Liddell Centre</b> Towards the salary of the Enterprise Manager.	£4,245	<b>Portobello Older People's Project</b> Towards transport costs for the twice weekly activity club and outings.	£2,500	<b>Whale Arts Agency</b> Towards the salary of the Adult Access and Participation in the Arts Officer.	£5,500
<b>Action Group Ltd</b> Towards the salary of the Co-ordinator of the siblings clubs for children with special needs, closing the appeal.	£11,740	<b>Fresh Start (Edinburgh)</b> Towards the salary of the Volunteer Services Manager.	£8,000	<b>Positive Help</b> Towards the salary of the Services and Volunteer Manager.	£9,000	<b>Women onto Work</b> To cover the Freelance Trainer's fees for the 12 week pre-vocational course for 11 women from BME communities.	£6,000
<b>Amica Pregnancy Crisis Centre</b> Towards the salary of the part-time Centre Assistant.	£4,000	<b>Friends of the Award in Edinburgh and the Lothians</b> Towards the salary of the Development Officer.	£8,000	<b>Prestonfield &amp; District Neighbourhood Workers Project</b> To support a weekly class for the elderly and disabled in computing and craftwork.	£5,284	<b>Young Mums Education Trust</b> To deliver 30 weekly ante-natal/parenting sessions at the Young Mums' Unit.	£1,500
<b>Artlink Edinburgh &amp; Lothians</b> To cover the staffing costs of the arts access programme.	£7,000	<b>Gorgie City Farm</b> Towards the salary of a Project Manager for the Out of Bounds Project.	£7,000	<b>Prop Stress Centre</b> To provide evening programmes and activities at Prop Stress Centre.	£6,369	<b>Youth Bus Group</b> To cover the salary of the Co-ordinator.	£10,296
<b>Bingham &amp; District 50+ Project</b> To provide the weekly gentle exercise classes.	£2,921	<b>Granton Youth Centre</b> Towards the salary of the Youth Development Worker on the employability scheme for disadvantaged young people, conditional upon written confirmation that the appointment has been made.	£9,000	<b>The Ripple Project</b> Towards the salary of the Project Manager.	£10,000	<b>Comhairle Nan Eilean Siar (Western Isles)</b>	
<b>Broomhouse Centre Representative Council</b> Towards the salary of the Co-ordinator for the young carers groups, conditional upon written confirmation that the appointment has been made.	£13,120	<b>Home-Start Leith &amp; North East Edinburgh</b> To support the group work, outings and celebrations.	£4,197	<b>SANDS Lothians</b> Towards the salary of the trained Counsellor for bereaved parents.	£7,566	<b>1st Stornoway Girls' Brigade Company</b> To cover the travelling costs of the girls and leaders to attend the Queens Badge and Leadership Training courses and purchase of equipment.	£2,500
<b>Care for Carers</b> Towards the salary of the part-time GP Carer Support Worker.	£7,250	<b>Into Work</b> Towards the salary of the Volunteer Co-ordinator to Bits and Bobs.	£7,000	<b>Scot-Pep</b> To cover the vehicle costs.	£6,764	<b>An Lanntair Ltd</b> Towards the salary of the Tutor.	£7,308
<b>Children 1st</b> Towards the salary of the Project Development Worker for Bfriends Wester Hailes, closing the appeal.	£11,533	<b>Kaimes Special School Association</b> To support two residentials for 24 young people with special needs in S1 and S2 at Benmore and the Calvert Trust.	£7,000	<b>Scottish Huntington's Association (Lothian Branch)</b> To support the Tai Chi sessions, outing costs and general stationery costs for the Lothian Branch.	£2,500	<b>Berneray Community Association</b> Towards the re-insulation of the hall, closing the appeal.	£2,000
<b>Columcille Centre</b> Towards the salary of the Co-ordinator and the Music for All workshops.	£3,351	<b>The Living Memory Association</b> Towards the salary of the Training Officer.	£9,529	<b>Senior Action Group Edinburgh</b> Towards the salary of the full-time Manager.	£8,000	<b>Caraidean Uibhist (Uist Befriending Service)</b> Towards the salary of the Co-ordinator.	£7,000
<b>Community Connections Scotland Limited</b> Towards the salary of the Development Manager.	£8,000	<b>Lothian Centre for Integrated Living</b> To support six 'Taking the Plunge' workshops for 72 disabled people.	£7,000	<b>Shakti Women's Aid</b> To cover the running costs of the Women's Group.	£2,496	<b>Carloway Youth Initiative</b> Towards the salary of the Youth Worker for one year only.	£10,000
<b>Corstorphine Dementia Project</b> Towards the transport costs of providing day-care for people with dementia.	£9,132	<b>Lung Ha's Theatre Company</b> Towards the salary of the Artistic Director, closing the appeal for year one.	£9,590	<b>Sleep Scotland</b> To support the salary of the Administrator for the Teens+ project.	£10,500	<b>Comann Feis Bharraigh</b> Towards the salary of the part-time Administrator, closing the appeal.	£5,048
<b>Craigmillar Ability Network</b> Towards the salary of the Manager/Fundraiser, closing the appeal.	£8,622	<b>MECOPP (Minority Ethnic Carers of Older People Project)</b> Towards the salary of the Development Officer for the Chinese communities in Edinburgh, Perth & Kinross and Dundee.	£15,000	<b>South Edinburgh Amenities Group</b> Towards the cost of delivering an evening and weekend transport service.	£6,000	<b>Crossroads Cobhair Bharrargh</b> Towards the salary costs of the Deputy Co-ordinator.	£6,897
<b>Craigmillar Literacy Trust</b> To support the outreach programme.	£4,000			<b>Speakability Edinburgh Group</b> Towards rent, members' visits, transport, leaflets, postage and stationery.	£4,650	<b>East Camp Trust</b> Towards the salary of the Development Manager.	£12,204
						<b>Newton &amp; Sandwick Community Partnership</b> Towards the salary of the Community Development Worker.	£6,000

## Standard Grant Scheme continued

<b>Paicr Social Club</b> To cover the running costs and the annual mainland trip of the members.	£2,500	<b>Kingdom Abuse Survivors Project</b> Towards the salary of the Specialist Worker for Mental Health and Sexual Abuse.	£7,000	<b>Church in the Mount Befriending Service</b> Towards the property costs of rent, insurance, utility services and repairs.	£5,375	<b>Glasgow Eagles Sports Club</b> To cover volunteer expenses, transport and equipment for the weekly activities for children and adults with special needs.	£2,500
<b>Southend Youth Forum</b> Towards the salary of the Youth Development Officer.	£4,761	<b>Kirkcaldy &amp; District Stroke Club</b> Towards transport, hall hire and trips.	£1,618	<b>Cranhill Arts Project</b> Towards the salary of the full-time Project Administrator.	£6,500	<b>Glasgow YWCA of Great Britain</b> Towards the salary of the Pre-Five Development Manager.	£7,000
<b>Stornoway YMCA, known as Bridge Community Centre</b> Towards the salary of the 'Y' Project Youth Worker.	£7,000	<b>Ladybank Ladybirds Playgroup</b> Towards the hall rent and salaries.	£2,500	<b>Crossroads (Greater Easterhouse) Care Attendant Scheme</b> To provide five SVQ courses to four members of staff in care, administration, management, and supervision.	£4,650	<b>Govanhill Youth Project</b> Towards the salary of the Ethnic Minorities Youth Worker, closing the appeal.	£9,781
<b>Volunteer Centre Western Isles</b> To cover the costs of general travel and subsistence.	£6,400	<b>Linton Lane Centre</b> To cover 10 caretaking hours per week, closing the appeal.	£3,225	<b>Dalmarnock Community Centre</b> Towards the salary of the Development Officer.	£8,000	<b>HAPPY (Help &amp; Protect Prisoners' Youngsters)</b> Towards the salary of the Project Leader.	£10,000
<b>Western Isles Rape Crisis Centre</b> Towards the training of up to 10 Volunteer Support Workers.	£8,000	<b>Lomonds Trust</b> Towards the salary of a Van Driver to serve the thrift shops in Kirkcaldy and Lochgelly and the NU2U project.	£10,762	<b>Dennistoun Community Youth Project</b> Towards the salary of the Project Co-ordinator.	£7,000	<b>Hidden Gardens Trust</b> Towards the salary of the Fundraising and Development Officer, conditional upon written confirmation that the appointment has been made.	£7,500
<b>Falkirk</b>		<b>RHET Fife Countryside Initiative Limited</b> To cover costs for primary school children from Methil and Buckhaven to visit a country estate and learn about farming and forestry.	£1,260	<b>Depot Arts Co</b> Towards the full costs of the 2008 Spring Term of 108 workshops for young people.	£12,530	<b>Home Supported Living Services (Scotland) Ltd</b> To cover the cost of the office rental to expand the service into the East of Scotland.	£7,500
<b>Couple Counselling Central Scotland</b> Towards the salary of the Manager.	£8,000	<b>Safe Space</b> To cover training costs.	£4,045	<b>Easterhouse Project</b> Towards the salaries of the sessional workers for the 5 to 11 year old youth group.	£2,413	<b>Home-Start Glasgow North West</b> Towards the salary of the part-time Volunteer Co-ordinator.	£6,000
<b>Crossline Central Charitable Trust</b> Towards the salary of the part-time Co-ordinator.	£6,663	<b>St Ninian's Parish Church of Scotland Glenrothes</b> Towards the heating system.	£10,000	<b>Emmaus Glasgow</b> Towards the salary of the Training/Workshop Manager.	£9,000	<b>Home-Start Glasgow South</b> Towards the salary of a Development Manager, conditional upon written confirmation that the appointment has been made.	£9,500
<b>Fife</b>		<b>Tayport Day Centre for the Elderly</b> Towards the insurance and costs of four trips.	£2,190	<b>Epilepsy Connections</b> Towards the salary of the full-time Project Co-ordinator, conditional upon written confirmation that the appointment has been made.	£7,000	<b>Jenniburn Centre</b> Towards the cost of sessional staff for the Youth Bridge Project, closing the appeal in year one.	£5,981
<b>115th Fife (Chapel) Scout Group</b> Towards the external works of the Scout Hall to close the appeal.	£5,884	<b>TIBAL (Together in Benarty &amp; Lochgelly)</b> To cover the salary of the part-time Administration Worker.	£7,075	<b>Ethnic Minority Men's Health Project</b> To cover the running costs of the group including volunteer expenses, cost of activities and outings and overheads.	£2,300	<b>Junction 12</b> Towards the salary of the Male Project Worker.	£8,000
<b>Age Concern Glenrothes</b> Towards the salary of the Transport Co-ordinator, and the travel expenses and training of the Co-ordinator and Volunteer Driver in year one.	£5,450	<b>City of Glasgow</b>		<b>Faith in Community (Scotland)</b> Towards the salary of the Operations Manager and overhead costs over one year only.	£57,223	<b>Kids &amp; Adults Together in Sighthill</b> To cover the salary of the Clerical Worker over one year only.	£12,614
<b>Arden House Projects</b> To cover the costs of training, volunteer travel expenses and volunteer meals.	£6,670	<b>3D Drumchapel</b> Towards the salary of the full-time Project Worker.	£6,306	<b>Family Action in Rogerfield &amp; Easterhouse (FARE)</b> Towards the salary of the full-time Neighbourhood Worker.	£15,585	<b>Lodging House Mission</b> Towards the salary of the Kitchen Supervisor.	£8,100
<b>Byre Theatre of St Andrews</b> Towards the Tutor's fees of the Heydays project for elderly people, closing the appeal.	£4,212	<b>Baillieston Community Care Ltd</b> Towards the salary of the part-time driver of the Day Care Centre.	£5,000	<b>Gallowgate &amp; Calton Children's Project Possibilities for East End Kids Ltd</b> Towards the Sessional Workers' costs.	£10,000	<b>M8's Utd</b> Towards the hall lets for the programme of sporting activities for children with autistic spectrum disorders.	£3,427
<b>Cowdenbeath Initiative</b> To cover the salary of a part-time Administrator.	£4,500	<b>Barlanark Greyfriars Church of Scotland</b> Towards the salary of the Youth Worker.	£5,000	<b>Germiston Community Association</b> Towards the salary of the full-time Caretaker.	£5,499	<b>Maryhill Citizens Advice Bureau</b> To provide the finishes and decoration of the renovated premises.	£7,682
<b>Families First - St Andrews</b> Towards the salary and costs of the Child Care Co-ordinator for one year only.	£8,000	<b>Beat-Route - Balornock Music Group</b> To purchase a computer/printer and install broadband as well as doubling the hours of a sessional Administration Worker to eight hours per week.	£2,489	<b>Giant Productions Ltd</b> To cover the Lead Artist's fees and materials to run regular activities for children with disabilities and their families, closing the appeal in year one.	£7,850	<b>MASA (Men Against Sexual Abuse)</b> To provide 250 counselling sessions to male survivors of sexual abuse.	£7,500
<b>Fife Elderly Forum Executive</b> Towards the salary of the Advocacy Development Worker, closing the appeal.	£7,490	<b>Brunswick Youth Centre</b> To cover the cost of youth activities including outward bound, cookery and multi-media, closing the appeal.	£5,490	<b>Glasgow Access Panel</b> Towards the salary of the Co-ordinator.	£11,000	<b>Milton Kids with Disabilities After School &amp; Holiday Club</b> Towards the salary of the Project Manager.	£10,000
<b>Fife Gingerbread</b> Towards the salary of the full-time Administrative Assistant, conditional upon written confirmation that the appointment has been made.	£9,156	<b>Calton Sheltered Housing Tenants Association</b> Towards the activities for the elderly including a day trip to Ayr, a Christmas dinner and a trip to the theatre.	£2,450	<b>Glasgow Braendam Link</b> Towards the salary of the Project Co-ordinator.	£3,500	<b>NCH Scotland</b> Towards the salary of the full-time Befriending Co-ordinator.	£10,000
<b>Home-Start Glenrothes</b> Towards the salary of the Family Support Worker to work with hard-to-reach families.	£7,928	<b>Castlemilk Pensioners' Action Centre</b> Towards the salary of the full-time Minibus Driver.	£7,500	<b>Glasgow Children's Holiday Scheme</b> Towards the salary of the part-time Co-ordinator.	£12,000		
<b>Kids Come First</b> Towards the salary of the Co-ordinator.	£7,232	<b>Castlemilk Youth Complex Ltd</b> To cover the salaries of three General Youth Workers.	£9,216				
		<b>Chinese Community Development Partnership</b> Towards the salary of the Youth Project Worker.	£7,000				

## Standard Grant Scheme continued

<b>North Area Transport Association</b>	<b>£7,500</b>	<b>St Clare's RC Church - Easterhouse</b>	<b>£1,008</b>	<b>The Highlands</b>		<b>Golspie Youth Action Project</b>	<b>£6,166</b>
To support the road fund licences and the vehicle insurance.		To provide an outing for 80 children and 20 adult volunteers in the St Clare's non-denominational playscheme.		<b>18th Inverness (Muirtown) Scout Group</b>	<b>£5,000</b>	Towards the salary of the Senior Sessional Worker.	
<b>North Glasgow Community Food Initiative</b>	<b>£7,153</b>	<b>St Dominic's Senior Citizens' Club</b>	<b>£2,400</b>	Towards the purchase of a new safety boat.		<b>Highland Disability Sport (HDS)</b>	<b>£12,480</b>
To fund the cost of a Cleaner, sessional staff and an Administrator.		To support a cultural trip for 150 older people to celebrate the 10th anniversary of the group.		<b>Alcohol Counselling (Inverness)</b>	<b>£10,296</b>	To cover the salary of the part-time Administrator.	
<b>PAGE (Pensioners Action Group East)</b>	<b>£9,000</b>	<b>St George's &amp; St Peter's Community Association</b>	<b>£7,500</b>	Towards the salary of the Development Worker.		<b>Integrating Toryglen Community Ltd</b>	<b>£7,000</b>
Towards the salary of the Development Worker.		Towards the salary of the Elderly Care Co-ordinator.		<b>Badenoch &amp; Strathspey Community Transport Company</b>	<b>£7,124</b>	Towards crèche facilities for refugees and asylum seekers attending the Integration and Orientation Programmes.	
<b>Parkhead Youth Project</b>	<b>£8,000</b>	<b>St Mungo's Day Centre</b>	<b>£10,779</b>	Towards the salary of the Field Worker, closing the appeal.		<b>Invergordon Church of Scotland</b>	<b>£3,086</b>
Towards the salary of the Senior Youth Worker.		Towards the salary of a full-time Day Care Officer.		<b>Befrienders Highland</b>	<b>£9,919</b>	Towards the painting & decorating of the hall.	
<b>Pearce Institute Development Fund</b>	<b>£11,918</b>	<b>Starter Packs Glasgow</b>	<b>£5,000</b>	Towards the salary costs of the Distance Befriender Co-ordinator plus on-costs of the project, closing the appeal.		<b>Inverness &amp; District Friends of ARMS Ltd</b>	<b>£10,000</b>
Towards the salary of the Chief Executive, closing the appeal in year one.		Towards the salary of the Administrator.		<b>Blast Drugs Project</b>	<b>£7,985</b>	Towards the salary of the Centre Manager.	
<b>Playbusters Ltd</b>	<b>£8,000</b>	<b>Strathclyde Autistic Society Ltd</b>	<b>£4,800</b>	Towards the salary of the Training and Development Officer.		<b>Inverness Citizens Advice Bureau</b>	<b>£8,000</b>
Towards the salary of the Development Officer.		To fund an activities weekend for 20 older children and their parents/siblings.		<b>Blythwood Care</b>	<b>£11,000</b>	Towards the salary of a new part-time Money Advisor.	
<b>The Preshal Trust</b>	<b>£8,150</b>	<b>Tak Tent Cancer Support Scotland</b>	<b>£6,695</b>	Towards the salary of the Food Bank Co-ordinator.		<b>Kilmuir &amp; Logie Easter Action &amp; Development Group (KALE)</b>	<b>£8,591</b>
Towards the salary of the Project Co-ordinator.		Towards the salary of the Manager.		<b>Caithness &amp; Sutherland Women's Aid</b>	<b>£7,225</b>	Towards the salary of the Development Worker's post (job share).	
<b>Prince &amp; Princess of Wales Hospice</b>	<b>£10,000</b>	<b>Taleem Trust Childcare</b>	<b>£6,300</b>	Towards the salary of the Co-ordinator.		<b>L'Arche (Inverness)</b>	<b>£11,088</b>
Towards the salary of the Arts Assistant over one year only.		Towards the salary of a part-time Crèche Worker, conditional upon written confirmation that the appointment has been made.		<b>Calman Trust Ltd</b>	<b>£12,000</b>	Towards the new Retirement Project Team Leader, conditional upon written confirmation that the appointment has been made, closing the appeal.	
<b>Rainbow Care Centre Limited</b>	<b>£3,588</b>	<b>Temple/Shafton Youth Project</b>	<b>£7,004</b>	Towards the salary of the Information and Advice Officer.		<b>Lochaber Action on Disability</b>	<b>£10,000</b>
Towards the salaries of sessional staff employed to maintain staff to client ratios during the holiday period, closing the appeal.		To cover the cost of youth activities for 32 young people aged 8 to 11 years old, three nights per week, 52 weeks per annum.		<b>Community Domestic Abuse Programme</b>	<b>£11,831</b>	Towards the salary of the Development Officer.	
<b>Reidvale Adventure Play Association Limited</b>	<b>£8,000</b>	<b>Toryglen Community Hall</b>	<b>£12,784</b>	Towards the salary of the new part-time Support Worker for one year only, conditional upon written confirmation that the appointment has been made.		<b>Lochaber Community Care Forum</b>	<b>£10,300</b>
Towards the salary of a Project Manager, conditional upon written confirmation that the appointment has been made.		To cover the salary of the Project Co-ordinator.		<b>Crossroads (Badenoch &amp; Strathspey) Care Attendant Scheme</b>	<b>£2,500</b>	Towards the salary of the Handyperson Co-ordinator.	
<b>Riverside Hall Organisation</b>	<b>£2,496</b>	<b>Toybox Lee Avenue</b>	<b>£7,015</b>	To cover the training costs of four staff completing SVQ level II and one at level III.		<b>Lochaber Rural Education Trust</b>	<b>£9,000</b>
Towards the salary of a sessional Catering Assistant, conditional upon written confirmation that the appointment has been made.		Towards the salary of the Play Co-ordinator.		<b>Crossroads Care Skye &amp; Lochalsh</b>	<b>£6,798</b>	Towards the salary of the Education Officer.	
<b>Roshni</b>	<b>£7,000</b>	<b>The Village Storytelling Centre</b>	<b>£7,800</b>	To cover 600 hours of extended respite care per annum.		<b>Merkinch Development Ventures</b>	<b>£7,030</b>
Towards publicity and training materials which will be produced in a multi-lingual format.		Towards the salary of the Project Director, and office rent and the cleaner's salary in year one.		<b>Cruse Bereavement Care - Inverness</b>	<b>£6,450</b>	Towards the salary of the Project Manager, conditional upon written confirmation that the appointment has been made.	
<b>Save the Children</b>	<b>£18,498</b>	<b>Volunteer Tutors' Organisation - Glasgow</b>	<b>£10,275</b>	Towards the cost of re-establishing the bereavement service in the Inverness area, closing the appeal.		<b>Partnerships for Wellbeing Limited</b>	<b>£10,000</b>
Towards the salary of a Project Development Worker, closing the appeal in year one.		Towards the salary of the Links Worker.		<b>Dachaibh Care &amp; Support Scheme</b>	<b>£3,388</b>	Towards the salary of the part-time Co-ordinator.	
<b>Scottish Academy of Asian Arts</b>	<b>£4,400</b>	<b>Wellhouse Community Trust</b>	<b>£10,000</b>	Towards the travel costs, closing the appeal in year one.		<b>Pultneytown People's Project</b>	<b>£12,897</b>
To provide 24 workshops through the Barnardos Apna Project for Asian children with a disability and their siblings.		Towards the salary of the Youth Worker.		<b>Day 1 Ltd</b>	<b>£13,000</b>	Towards the salary of the Funding Finance Manager, conditional upon written confirmation that the appointment has been made.	
<b>Scottish Marriage Care</b>	<b>£6,250</b>	<b>Wheezzurs Group</b>	<b>£2,500</b>	Towards the salary of the Programme Co-ordinator.		<b>Rape &amp; Abuse Line (RAL)</b>	<b>£7,000</b>
Towards publicity and training materials, administrative support, supervision and travel.		To cover the cost of coach hire for eight outings, rent and running costs.		<b>Dingwall Drop-in Kafe</b>	<b>£6,000</b>	Towards the cost of the recruitment and ongoing training costs for the volunteers.	
<b>South Camlachie Youth Project</b>	<b>£7,242</b>	<b>Women's Centre Information &amp; Support Project</b>	<b>£6,400</b>	Towards the salary of the Project Leader.		<b>RHET Highland Countryside Initiative</b>	<b>£4,350</b>
Towards the salary of the Youth Participation Worker.		To provide 40 sessions each of sewing classes, craft classes, Reiki healing and Indian head massage at the Women's Centre.		<b>Dornie &amp; District Community Village Hall</b>	<b>£2,500</b>	To cover the travelling costs of the part-time Organiser.	
<b>South Shawlands Church of Scotland</b>	<b>£3,200</b>	<b>Young Possil Futures</b>	<b>£10,000</b>	Towards the installation of the new stage and equipment.		<b>Shopmobility Highland</b>	<b>£8,050</b>
Towards the purchase of a disabled stair climber thus improving access to the church hall.		To meet the costs of 1,000 hours of sessional youth work.		<b>Duror Outreach Volunteer Enterprise (DOVE)</b>	<b>£7,500</b>	To cover the volunteer training and expenses for one year.	
<b>Springburn Alive &amp; Kicking Project</b>	<b>£7,500</b>	<b>Youth Community Support Agency</b>	<b>£13,250</b>	Towards the salary of the part-time Support Worker, and administration and premises costs.		<b>Skye &amp; Lochalsh Community Care Forum</b>	<b>£8,788</b>
To cover the cost of three sessional drivers and three sessional cafe assistants over one year only.		Towards the salary of the Contracts Officer, who will focus on operational development and effective management.		<b>Glenurquhart Childcare Centre</b>	<b>£6,855</b>	To cover the salary of the part-time Administrator for one year only.	
				To cover the five hours increase to the Administrator's costs and costs of a new Auxiliary Worker, conditional upon written confirmation that the appointment has been made, closing the appeal.		<b>Skye &amp; Lochalsh Council on Alcohol</b>	<b>£3,000</b>
						Towards the costs of awareness training in primary schools, closing the appeal.	

## Standard Grant Scheme continued

<b>Skye &amp; Lochalsh Mental Health Association</b> Towards the salary of the Assistant Manager.	<b>£8,353</b>	<b>Calder Pre-5 Playgroup</b> Towards the salary of a part-time Playleader.	<b>£2,500</b>	<b>SISG Enterprises Ltd</b> Towards the salary of the part-time Manager.	<b>£6,500</b>	<b>West Lothian</b>	
<b>SOAR Youth Projects</b> Towards the salaries of the Play Workers within the out of school club for primary school aged children.	<b>£9,000</b>	<b>Capability Scotland</b> Towards the salary of the Brain Injury Co-ordinator.	<b>£6,000</b>	<b>South Lanarkshire Carers Network Limited</b> To cover the cost of a new support server to upgrade the IT system to support the growing staff team within the network.	<b>£2,771</b>	<b>10th Livingston Guides</b>	<b>£2,323</b> To purchase 4 patrol tents, 3 leader's tents, 24 foam mats, 3 wind-up torches and 24 sets of crockery and cutlery.
<b>Voluntary Action Lochaber</b> Towards the salary of the new Members Development Post, closing the appeal.	<b>£8,566</b>	<b>Chapelside Women's Health Project</b> Towards the crèche costs.	<b>£5,300</b>	<b>South Lanarkshire Volunteering Enterprise</b> Towards the salary of the full-time Co-ordinator of the access project.	<b>£8,143</b>	<b>Answer Project Ltd</b>	<b>£4,563</b> Towards the salary of the Cook for the day care provision of the dementia clients and the community café.
<b>Volunteering Highland Ltd</b> Towards the salary of the Handy Persons Scheme Project Co-ordinator.	<b>£6,300</b>	<b>Croy Miners' Welfare Charitable Society</b> Towards the salary of the Administrative Assistant.	<b>£7,765</b>	<b>Tinto School After School Club</b> To cover the salary of the Co-ordinator for 10 hours per week.	<b>£3,300</b>	<b>Braid House Day Centre Ltd</b>	<b>£6,000</b> Towards the salary of a part-time Care Worker, conditional upon written confirmation that the appointment has been made.
<b>West Ainess Residents Association</b> Towards the salary of the Administrator for one year only, conditional upon written confirmation that the appointment has been made.	<b>£7,000</b>	<b>Down's Syndrome Scotland (Ups &amp; Downs Theatre Group)</b> Towards the utilities, rent and insurance costs of the unit for storing theatre equipment.	<b>£2,500</b>	<b>Westwood Parish Church</b> Towards the cost of sound equipment for the band nights for young people under 18 years old in the community.	<b>£2,500</b>	<b>Broxburn Family &amp; Community Development Centre</b>	<b>£6,900</b> To provide 500 hours per annum of Sessional Playworkers during term time.
<b>West Caithness Community Transport</b> Towards the new vehicle's running costs.	<b>£2,500</b>	<b>Elutheria Company Ltd</b> Towards the salary of the part-time Chef.	<b>£5,000</b>	<b>East Lothian</b>		<b>Carers of West Lothian</b>	<b>£6,300</b> Towards the salary of an Outreach Worker.
<b>Wick Youth Club</b> To cover the salary of the MLM Co-ordinator.	<b>£8,333</b>	<b>Glenboig Neighbourhood House</b> Towards the salary of the full-time Catering Development Worker to run the community cafe, closing the appeal.	<b>£6,796</b>	<b>Carefree Kids</b> To support the delivery of first aid training to 72 disadvantaged families in East Lothian.	<b>£2,475</b>	<b>Dechmont Playgroup</b>	<b>£1,878</b> Towards the salary of a Play Worker, conditional upon written confirmation that the appointment has been made.
<b>Youth Highland</b> Towards the salary of the Youth Work Manager.	<b>£15,000</b>	<b>Langloan Dundyvan Holiday Community Care Caravan</b> To repair the wheelchair ramp, provide a new toilet pan, bedroom carpet, and bed linen.	<b>£1,090</b>	<b>Carers of East Lothian</b> Towards the salary of the Carers' Support Worker for the specific Care and Rural Carers' Project.	<b>£8,000</b>	<b>Family Mediation Lothian</b>	<b>£5,000</b> Towards the salary of the West Lothian Area Manager.
<b>Youth Inclusive</b> Towards the salary of two new part-time Street Workers, conditional upon written confirmation that the appointments have been made.	<b>£6,000</b>	<b>Motherwell &amp; Wishaw Citizens Advice Bureau</b> To install an integrated telephone system.	<b>£4,525</b>	<b>East Lothian Community Care Forum</b> Towards the salary of the Information and Communications Officer, conditional upon written confirmation that the appointment has been made.	<b>£7,000</b>	<b>Home-Start West Lothian</b>	<b>£9,000</b> Towards the salary of the Co-ordinator to support families in southwest West Lothian.
<b>Inverclyde</b>		<b>Parkinson's Self Help Group (North Lanarkshire)</b> Towards the salary of the Facilities Manager.	<b>£7,450</b>	<b>East Lothian Roots &amp; Fruits</b> Towards the salary of the part-time Project Worker, conditional upon written confirmation that the appointment has been made.	<b>£5,000</b>	<b>Linlithgow Young People's Project</b>	<b>£7,450</b> Towards the salary of the Project Worker.
<b>Bow Farm Home Support Service</b> Towards the rent of the new premises, closing the appeal.	<b>£3,600</b>	<b>Utheo Ltd</b> Towards the salary of the Volunteer Co-ordinator.	<b>£9,000</b>	<b>East Lothian Special Needs Playschemes</b> Towards the salary of the part-time Assistant Co-ordinator, closing the appeal.	<b>£6,552</b>	<b>St Andrew's Church - Bo'ness</b>	<b>£6,340</b> Towards the salary of the Key Youth Worker.
<b>CVS Inverclyde</b> Towards the salary of the Administration and Communication Officer.	<b>£7,477</b>	<b>South Lanarkshire</b>		<b>East Lothian University of the Third Age (U3A)</b> To cover the costs of room hire for a 12-month period.	<b>£1,100</b>	<b>St Mary's Cathedral Workshop Limited</b>	<b>£7,000</b> To support the college fees and training of the four current apprentices.
<b>Girlguiding Renfrewshire South Newton Camp Outdoor Training Centre</b> Towards the cost of an indoor climbing wall at South Newton Outdoor Training Centre.	<b>£2,500</b>	<b>5th East Kilbride Boy's Brigade Company</b> Towards the cost of physical exercise activity equipment, and a laptop and projector.	<b>£2,500</b>	<b>First Step Community Project</b> Towards the salary of the Outreach Worker.	<b>£12,000</b>	<b>West Lothian Playscheme Association</b>	<b>£2,200</b> To support the summer arts workshop and the Fun in the Park Day for 500 children.
<b>Inverclyde Family Contact Centre</b> To cover the salary of the Co-ordinator.	<b>£4,550</b>	<b>Bridge Community Project</b> Towards the salary of the Project Co-ordinator.	<b>£3,350</b>	<b>Hollies Day Centre Committee</b> Towards the salary of the part-time Administrator in year one, conditional upon written confirmation that the appointment has been made, closing the appeal.	<b>£4,700</b>	<b>West Lothian Youth Theatre</b>	<b>£10,350</b> Towards the freelance staff costs and the production set costs for the delivery of a play for 15 young people of mixed abilities.
<b>Parklea Association Branching Out Ltd</b> Towards the salary of the Training and Development Officer.	<b>£8,000</b>	<b>Clydesdale Befriending Group for Adults with Learning Disabilities</b> Towards the rent in the new premises.	<b>£6,500</b>	<b>North Berwick Dry Bar Association</b> Towards the salary of the Project Worker.	<b>£7,000</b>	<b>Yellow Teapot Club</b>	<b>£2,240</b> Towards the salaries of the Project Workers.
<b>Phoenix Community Health Project</b> To cover the cost of rent of the training/meeting room as a community resource for a minimum of 40 organisations per annum.	<b>£4,880</b>	<b>Clydesdale Community Initiative</b> Towards the costs of one community project each year involving 40 adults and young people with mental health and social difficulties in years one and two and towards the salary of a full-time Landscaper in year three.	<b>£6,000</b>	<b>Prestonpans Special Needs Youth Club (PSNYC)</b> Towards the salary of the Manager.	<b>£3,000</b>	<b>Midlothian</b>	
<b>North Lanarkshire</b>		<b>East Kilbride Disability</b> Towards the salary of the Art Ability Co-ordinator.	<b>£8,500</b>	<b>Volunteer Development East Lothian</b> Towards the salary of the Befriending Project Co-ordinator.	<b>£10,000</b>	<b>Beeslack All Stars Disabled Sports Club</b>	<b>£3,780</b> To cover the cost of the hire of facilities including the swimming pool.
<b>Bellshill &amp; Mossend YMCA</b> Towards the salary costs of running the drop-in centre within the youth activities.	<b>£5,000</b>	<b>Hamilton Information Project for Youth (HIPY)</b> Towards the salary of the Youth Information Worker.	<b>£7,500</b>			<b>Bright Sparks Playgroup</b>	<b>£2,000</b> To provide transport for families attending the special needs playgroup.
<b>Buchanan Street Parents &amp; Carers Group</b> Towards the salary of the Horticulturist who will tutor the clients.	<b>£12,000</b>	<b>Haven Cancer Caring, Counselling Communication Centre</b> Towards the salary of the full-time Administrator.	<b>£10,000</b>			<b>Broomhill Day Centre</b>	<b>£5,800</b> Towards the salaries of two Kitchen Assistants at the day centre.
		<b>Lanarkshire Rape Crisis Centre</b> To cover volunteer costs, client expenses and increased hours for the Support Co-ordinator.	<b>£9,193</b>				

## Standard Grant Scheme continued

<b>Cherry Road Activity Club</b> To provide young people with special needs Art Therapy sessions for a 20-week period.	£2,242	<b>Orkney</b>		<b>Special Treats Group</b> Towards the cost of a weekend trip for 40 older people.	£1,800	<b>Community Enterprise Limited</b> To purchase computer equipment to enhance the services provided to social enterprises.	£6,600
<b>Community Health Improvement &amp; Regeneration Project</b> Towards the salary of the part-time Care Assistant at the Day Centre.	£4,515	<b>Counselling &amp; Family Mediation Orkney</b> To cover the additional hours of the Co-ordinator's salary.	£6,684	<b>Renfrewshire</b>		<b>Community Volunteers Enabling Youth Project (COVEY)</b> Towards the salary of the full-time Befriending Project Worker.	£8,655
<b>Enlighten - Tackling Epilepsy</b> Towards the salary of the Senior Support Officer.	£7,000	<b>Couple Counselling Orkney</b> Towards the training and supervision of a new Counsellor.	£2,825	<b>Go Country</b> Towards the salary of the Project Manager over one year only.	£11,760	<b>Contact a Family Scotland</b> To support three local parent representatives.	£6,000
<b>Gorebridge Opportunities Limited</b> Towards the salary of the Project Co-ordinator.	£7,000	<b>Crossroads (Orkney)</b> To cover the running costs of the holiday play schemes during Easter and Summer, closing the appeal.	£5,165	<b>Home-Start Renfrewshire</b> Towards the salary of the Co-ordinator, closing the appeal.	£10,326	<b>Contact the Elderly</b> To cover the salary of the Executive Officer for Scotland, supporting two Development Officers and over 500 volunteers Scotland-wide.	£8,444
<b>Howgate Village Hall Association</b> Towards the salary of the part-time Development Worker, closing the appeal.	£5,529	<b>Home-Start Orkney</b> Towards the salary of the Co-ordinator.	£9,392	<b>Johnstone Castle Community Learning Centre</b> Towards the salary of the full-time Volunteer Co-ordinator, conditional upon written confirmation that the appointment has been made on a full-time basis.	£5,500	<b>COSCA</b> Towards the salary of the part-time Recognition Scheme Development Officer.	£8,000
<b>Loanhead After School Care Club</b> Towards the salary of the Project Manager.	£8,000	<b>St Magnus Festival</b> To cover 14 days workshop fees with special needs children.	£2,100	<b>Paisley Young Men's Christian Association</b> Towards the salaries and travel expenses of two part-time Detached Youth Workers.	£8,028	<b>Council for Music in Hospitals</b> To fund 30 concerts in care units across Scotland.	£6,120
<b>Loanhead Community Learning Centre</b> Towards the salary of the Development Worker.	£10,400	<b>Voluntary Action Orkney</b> Towards the salary of the Volunteer Manager.	£10,182	<b>Paisley Young Men's Christian Association</b> To cover the cost of surveying 7,000 young people to identify personal development needs which will inform the implementation of a programme to increase self esteem and access to opportunities, particularly to those that are most disadvantaged.	£47,925	<b>Crew 2000</b> Towards the salary of the Outreach Co-ordinator.	£8,000
<b>Marchburn Playgroup</b> Towards the salary of a Playworker.	£2,340	<b>Westray Development Trust</b> Towards the running costs of the local youth facility.	£2,500	<b>Renfrewshire CVS</b> Towards the cost of the office rent.	£10,000	<b>Cruse Bereavement Care Scotland</b> Towards the salary of the Training and Development Manager.	£10,000
<b>Mayfield &amp; Easthouses Youth 2000 Project</b> Towards the salary of the Young Men's Worker.	£9,000	<b>Women's Aid Orkney</b> Towards the salary of the Support Worker.	£10,000	<b>Scotland-wide</b>		<b>Depression Alliance Scotland</b> Towards the salary of the Co-ordinator.	£7,000
<b>Midlothian Befriending Scheme</b> Towards the salary of the Senior Co-ordinator.	£8,000	<b>Perth &amp; Kinross</b>		<b>Autism Initiatives UK</b> Towards the salary of the Volunteer Co-ordinator.	£13,000	<b>Diabetes UK Scotland</b> Towards the salary of the Volunteer Development Facilitator in Scotland.	£14,192
<b>Midlothian Voluntary Action</b> Towards the salary of the Development Worker.	£8,000	<b>Comrie Development Trust</b> To cover the salary of the Project Support Worker.	£15,500	<b>Benchtoours Productions Ltd</b> To cover the salary of a Support Worker for the disabled actors, and signing and audio description.	£7,466	<b>Donaldson's College</b> Towards the salary of the Keyworker for the Working Together project.	£10,500
<b>Pathhead Youth Project</b> Towards the salary of the Youth Worker for one year.	£10,749	<b>Corbenic Camphill Community Limited</b> To support the running costs of the Befriending/Workshop Volunteer Project, closing the appeal.	£6,300	<b>Birthlink</b> Towards the cost of a new IT server and installation of software and hardware for a new database, together with the Administrator and volunteer training.	£9,693	<b>Drake Music Project Scotland</b> Towards the salary of the Artistic Director.	£8,000
<b>Thornton Rose Riding for the Disabled</b> To cover the costs of feed, hay, and farrier charges.	£4,900	<b>Friends of Guiding Auchterarder</b> Towards the new kitchen and plumbing work.	£5,000	<b>British Stammering Association</b> Towards the salary of the Scottish Development Manager.	£7,500	<b>Edinburgh Area Scout Council</b> For the specialist floor coverings, in particular for the 'wet rooms' of the toilets and shower rooms for those with a disability, conditional upon written confirmation of works being instructed.	£8,150
<b>Moray</b>		<b>Glenfarg Public Hall Association</b> Towards the kitchen of the hall extension.	£7,150	<b>British Youth for Christ</b> Towards the pitch and trailer for the 'Kick Street Football Pitch Project' for use across Scotland.	£11,500	<b>Epilepsy Scotland</b> Towards the salary of the User Involvement Officer.	£12,500
<b>Crossroads (Moray) Care Attendant Scheme</b> Towards the salary of the Assistant Co-ordinator, conditional upon written confirmation that the appointment has been made.	£6,000	<b>Highway</b> Towards costs for transport, administration, events, running costs and the Sessional Worker.	£2,500	<b>Brittle Bone Society</b> Towards the salary of the Support Worker.	£7,000	<b>Equibuddy</b> Towards the salary of the Head Coach for one year only, conditional upon written confirmation that the appointment has been made.	£10,000
<b>The General Anderson Trust</b> For the redecoration, new flooring and kitchen units in Ogilvie Unit and flooring in Easton House.	£7,908	<b>Horsecross Arts Ltd</b> Towards the running costs of the music and drama project for people with learning disabilities.	£4,600	<b>Caledonia Youth</b> Towards the salary of the programme Co-ordinator for the Young Offenders' Programme for one year only, conditional upon written confirmation that the appointment has been made.	£8,500	<b>Four Square (Scotland)</b> Towards the salary of the CORE Co-ordinator to track and monitor the progression of 200 young offenders towards employment.	£30,000
<b>Elgin Youth Development Group</b> Towards the salary of the Administrator.	£6,594	<b>Independent Advocacy Perth &amp; Kinross</b> Towards the salary of the Volunteer Co-ordinator.	£10,000	<b>Care for the Family</b> To recruit, train and resource three area representatives.	£8,720	<b>Get Connected Helpline</b> Towards the salary costs proportionate to Scotland.	£10,552
<b>Hopeman Skate/BMX Club</b> For skatepark equipment, closing the appeal.	£3,932	<b>Kinross-shire Volunteer Group</b> Towards the cost of volunteer drivers' expenses.	£2,500	<b>Child Brain Injury Trust</b> Towards the salary of the Programme Manager.	£10,000		
<b>Moray Mental Health</b> Towards the costs of six bus trips for people with mental ill health.	£2,500	<b>Kirkmichael Session House &amp; Open Learning Centre</b> Towards the salary of the Development Worker and overheads.	£6,903				
<b>Shopmobility Moray Limited</b> Towards the rental costs of the premises.	£5,000	<b>Perth Six Circle Group</b> Towards the salary of the Project Manager.	£8,300				
		<b>Safe-Tay</b> To purchase a printer, ink, PC and monitor.	£2,456				
		<b>Scripture Union Scotland</b> Towards the construction of the Mountain/Trail Bike Skills Course.	£12,500				

## Standard Grant Scheme continued

<b>Happy Days Children's Charity</b> To provide holidays for 11 children with severe physical and mental disabilities and day trips and performing arts access to 220 children from special needs schools and disability groups.	£9,128	<b>Royal Society of Edinburgh</b> To enable the continuation of scientific, medical and social research into 'Ageing Population with the aim of improving quality of life', conditional upon a presentation of key findings at the Annual Forum and evaluation by Evaluation Support Scotland.	£300,000	<b>The Venture Trust</b> To cover the Scottish aspect of the Reports and Referral Worker.	£15,437	<b>Toddler Time</b> Towards running costs in the new premises including rent, heating and lighting.	£4,360
<b>Hearts &amp; Minds</b> To pay for the on-going team training of the existing practitioners.	£7,296	<b>Royal Zoological Society of Scotland</b> Towards the salary of the new full-time Outreach Worker, targeting remote and economically disadvantaged communities.	£10,000	<b>West of Scotland Seniors Forum</b> Towards the salary of the Development Officer.	£9,000	<b>Shetland</b>	
<b>Hopscotch Children's Charity</b> Towards the salary of the Project Worker.	£7,000	<b>Royston Trust</b> Towards the salary of the Development Manager, conditional upon written confirmation that the appointment has been made, closing the appeal.	£8,256	<b>West Scotland Deaf Children's Society</b> Towards the salary of the Family Support Officer.	£8,900	<b>Crossroads (Shetland) Care Attendant Scheme</b> To provide cover for 688 sessions of respite care for elderly independent clients.	£13,767
<b>Institute of Fundraising Scotland</b> Towards the salary of the Public Affairs Manager, conditional upon written confirmation that the appointment has been made.	£12,392	<b>Scottish Community Care Forum</b> To meet the costs of running two open networking events, one in the North of Scotland and one in the South.	£2,500	<b>Young Enterprise Scotland</b> Towards the cost of delivering life skills programmes in two additional residential care units benefiting 120 excluded young people, closing the appeal in year one.	£12,850	<b>Cullivoe Public Hall Trust</b> To purchase fixed bench seating.	£6,371
<b>Move On</b> Towards the salary of the Housing Education Service Manager.	£12,000	<b>Scottish Detainee Visitors (SDV)</b> Towards the salary of the Co-ordinator.	£6,000	<b>Scottish Borders</b>		<b>Shetland Community Bike Project</b> Towards the running costs, closing the appeal.	£3,995
<b>Neighbourhood Networks in Scotland</b> Towards the salary of the Network Member Development Manager.	£8,400	<b>Scottish Huntington's Association</b> Towards the salary of a Service Development Manager over one year only.	£10,000	<b>Borders Counselling on Alcohol &amp; Substances</b> Towards the salary of the Project Worker, working one-to-one with young people particularly in the Jedburgh/Kelso area.	£10,000	<b>Shetland Council of Social Service</b> To cover the production and distribution costs of five issues of the newsletter.	£4,200
<b>The Neurofibromatosis Association</b> Towards the salary of the Volunteer Development Manager for Scotland.	£7,000	<b>Scottish Marriage Care</b> Towards the merger costs of Scottish Marriage Care and Stepfamily Scotland over an 18 month period.	£63,746	<b>Borders Independent Advocacy Service - BIAS</b> Towards the salary of the Development Worker, closing the appeal in years one and two.	£7,000	<b>Stirling</b>	
<b>Nordoff-Robbins Music Therapy (Scotland)</b> Towards the salary of a Senior Music Therapist operating from the Midlothian base.	£13,084	<b>Scottish Personal Assistant Employers Network</b> Towards the salary of the Clerical Officer.	£7,500	<b>Borders Voluntary Community Care Forum</b> To cover the salary of a Link Worker and volunteer expenses to establish the service in one area.	£7,300	<b>Carers Forum Stirling Area</b> Towards purchasing and installing a new server, new software, two computers for the Young Carers' Project along with one year's maintenance, closing the appeal in year one.	£8,599
<b>PAMIS</b> Towards the salary of the Information Officer.	£7,000	<b>Scottish Refugee Council</b> Towards the salary of an Employment/Education Worker.	£9,000	<b>Borders Wheelchair Curling Club</b> Towards the cost of the transport, hire of the ice rink and specially adapted equipment to enable the club to operate on a weekly basis throughout the session.	£8,676	<b>Central Scotland Rape Crisis &amp; Sexual Abuse Centre</b> Towards the salary of a Youth Project Worker.	£8,000
<b>Parents Together</b> To support the costs for stationery, telephone, heating and lighting, travel and subsistence.	£3,221	<b>Scottish Spina Bifida Association</b> Towards the salary of one Family Support Worker.	£9,000	<b>Coldstream Community Trust (St Cuthbert's)</b> Towards the salary of the Project Manager.	£12,000	<b>CSV</b> Towards volunteer travel and volunteer recognition events, closing the appeal.	£3,500
<b>Partners in Advocacy</b> To cover one and a half days of the Co-ordinator's salary specifically for the Inclusion Group.	£8,637	<b>Scottish Therapeutic Gardening Network</b> Towards the salary of the Information and Support Officer.	£6,500	<b>Duns Youth Centre</b> Towards the salary of the Multi-Media Youth Worker for 21 hours per week.	£11,032	<b>Dunblane Youth &amp; Sports Centre Trust</b> Towards the salary of the Children & Young People's Worker.	£7,000
<b>Penumbra Respite Care Ltd</b> Towards the cost of the Business Development Manager.	£5,525	<b>Shared Care Scotland</b> Towards the salary of the Communications and Information Manager.	£8,000	<b>Eddleston Village Hall</b> To cover the cost of windows and external doors and floor finishes in the new extension comprising kitchen and toilet facilities, conditional upon written confirmation of works being instructed.	£7,500	<b>Home-Start Stirling</b> Towards the rental costs of the premises.	£10,000
<b>The Prince's Trust Scotland</b> To cover the salary of one full-time Support Worker for one year only.	£23,607	<b>SOBS (Survivors of Bereavement by Suicide)</b> Towards administration costs and volunteer expenses.	£2,500	<b>Gala Youth Project</b> Towards the salary of the Project Worker.	£7,000	<b>Plus</b> Towards the salary of the Project Manager of the Bank project for adults aged 18 to 25 with learning disabilities.	£13,000
<b>The Princess Royal Trust for Carers (Scotland)</b> Towards the salary and overhead costs of the Scottish Operations Manager.	£23,904	<b>Special Needs Information Point - SNIP</b> Towards the salary of an Information, Advice and Support Worker.	£7,000	<b>Ish'uze Youth Action Project</b> Towards the salary of the Project Co-ordinator.	£7,000	<b>The Rock Community Project</b> Towards the salary of the Youth Worker.	£8,400
<b>Project Ability Ltd</b> For the arts project working with 32 Black and Ethnic Minority disabled people each year, closing the appeal.	£4,437	<b>Stepfamily Scotland</b> To provide public transport, advertising, fund the supervisor, leaflets, publications and annual reports, closing the appeal in year one.	£12,661	<b>Princess Royal Trust Borders Carers Centre</b> To cover the group expenses of the Young Carers' Project which includes transport accommodation and general costs.	£12,772	<b>Stirling &amp; District Association for Mental Health</b> Towards the salary of the YPBS Co-ordinator.	£8,000
<b>React (Rapid Effective Assistance for Children with Potentially Terminal Illness)</b> To cover the cost of a sleep system, sensory equipment, seating systems and hoist for children in Scotland with a terminal illness.	£2,500	<b>Tamba, Twins &amp; Multiple Births Association</b> Towards the salary of the Regional Co-ordinator.	£7,000	<b>St Peter's Under 5s</b> Towards the cost of hall rent and storage space.	£2,000	<b>Volunteer Centre Stirling</b> Towards the salary of the Support Worker for the volunteers and buddies in the mental health project.	£6,000
<b>Reality Adventure Works In Scotland Limited</b> Towards the salary of the Project Administration Manager.	£10,125	<b>The Third Age Trust</b> To cover the start-up costs of eight new activity groups for older people no longer in employment targeting rural and economically disadvantaged areas.	£3,420	<b>Stewartry Council of Voluntary Service</b> Towards the salary of the Development Officer to deliver the Capacity Building Training Programme.	£5,017		

# Capacity Building Grants

<p><b>Aberdeen City</b></p> <p><b>Aberdeen Telephone Samaritans</b> £985 Covering two days Organisational Review consultancy and on-costs.</p> <p><b>Torry Youth Cafe Development Group</b> £6,344 Covering 11 days strategic planning, fundraising and governance consultancy and on-costs together with Organisational Review costs.</p> <p><b>Aberdeenshire</b></p> <p><b>Daviot Village Hall Trustees</b> £5,617 Covering nine days strategic planning, governance and fundraising consultancy and on-costs together with Organisational Review costs.</p> <p><b>Gordon Rural Action &amp; Information Network-Grain</b> £6,261 Covering 10 days governance, strategic planning consultancy and on-costs together with Organisational Review costs.</p> <p><b>Angus</b></p> <p><b>Montrose YMCA</b> £6,060 Covering 12 days governance and strategic planning consultancy and on-costs together with Organisational Review costs.</p> <p><b>Argyll &amp; Bute</b></p> <p><b>Achievement Bute</b> £4,240 Covering nine days governance, strategic planning and business planning consultancy and on-costs together with Organisational Review costs.</p> <p><b>Argyll &amp; Bute Citizens Advice Bureau</b> £7,215 Covering 12 days governance, strategic planning, business planning, and fundraising consultancy and on-costs together with Organisational Review costs.</p> <p><b>Helensburgh &amp; Lomond Carers' Project</b> £4,692 Covering 10 days governance, business planning and fundraising consultancy and on-costs.</p> <p><b>Clackmannanshire</b></p> <p><b>Community Partnership Team for Regeneration</b> £8,056 Covering 14 days strategic planning, marketing and governance consultancy and on-costs together with Organisational Review costs.</p> <p><b>Dumfries &amp; Galloway</b></p> <p><b>Annandale &amp; Eskdale Childcare Network</b> £5,478 Covering 10.5 days strategic planning, business planning and fundraising consultancy and on-costs together with Organisational Review costs.</p> <p><b>City of Dundee</b></p> <p><b>Dundee Voluntary Action</b> £5,988 Covering 12 days business planning, governance and marketing consultancy and on-costs together with Organisational Review costs.</p>	<p><b>The Inclusion Group (Dundee)</b> £3,360 Covering seven days business planning and financial planning consultancy and on-costs together with Organisational Review costs.</p> <p><b>Little Theatre Trust</b> £932 Covering an Organisational Review only.</p> <p><b>Signpost International</b> £5,714 Covering 10 days strategic planning, resource planning, governance and fundraising consultancy and on-costs together with Organisational Review costs.</p> <p><b>Tayside Association for the Deaf</b> £7,162 Covering 14 days governance and strategic planning consultancy and on-costs together with Organisational Review costs.</p> <p><b>City of Edinburgh</b></p> <p><b>Family Service Unit Scotland (now known as Circle)</b> £5,356 Covering 10.5 days governance, strategic planning and fundraising consultancy and on-costs together with Organisational Review costs.</p> <p><b>Health Opportunities Team</b> £4,894 Covering 9.5 days governance, strategic planning and fundraising strategy consultancy and on-costs together with Organisational Review costs.</p> <p><b>Liberton Area Handicapped Association Ltd</b> £5,187 Covering 11 days marketing, governance and fundraising consultancy and on-costs together with Organisational Review costs.</p> <p><b>Pilton Community Health Project</b> £6,495 Covering 11 days financial planning, governance, business planning and marketing consultancy and on-costs together with Organisational Review costs.</p> <p><b>Falkirk</b></p> <p><b>Community Training &amp; Development Unit (Forth Valley)</b> £5,922 Covering 11 days strategic planning, business planning and fundraising consultancy and on-costs together with Organisational Review costs.</p> <p><b>Wider Access to (Denny High) School Project</b> £3,287 Covering seven days business planning consultancy and on-costs together with Organisational Review costs.</p> <p><b>Fife</b></p> <p><b>Age Concern Glenrothes</b> £4,316 Covering nine days strategic planning and governance consultancy and on-costs together with Organisational Review costs.</p> <p><b>Benarty Cares</b> £3,525 Covering seven days fundraising and marketing consultancy and on-costs.</p> <p><b>Community Mums (Scotland)</b> £4,926 Covering 9.5 days governance, strategic planning and fundraising consultancy and on-costs together with Organisational Review costs.</p>	<p><b>Dunfermline Women's Aid</b> £5,848 Covering 10 days strategic planning and governance consultancy and on-costs together with Organisational Review costs.</p> <p><b>Glasgow City</b></p> <p><b>Bridgeton St Francis in the East Church</b> £5,220 Covering 10 days strategic planning, fundraising and marketing consultancy and on costs together with Organisational Review costs.</p> <p><b>Community Health Shop Limited</b> £4,875 Covering 10 days governance, marketing and communication consultancy and on-costs together with Organisational Review costs.</p> <p><b>Crossroads (Greater Easterhouse) Care Attendant Scheme</b> £5,296 Covering 10 days governance, business planning and fundraising consultancy and on-costs together with Organisational Review costs.</p> <p><b>Dalmarnock Community Centre</b> £5,095 Covering 10.5 days governance, business planning, fundraising strategy consultancy and on-costs together with Organisational Review costs.</p> <p><b>Glasgow the Caring City</b> £5,409 Covering 10 days governance, strategic planning, resource planning and marketing consultancy and on-costs together with Organisational Review costs.</p> <p><b>Indepen-dance</b> £2,213 Covering four days fundraising strategy consultancy and on-costs.</p> <p><b>Parkhead Youth Project</b> £3,700 Covering eight days business planning and fundraising strategy consultancy and on-costs together with Organisational Review costs.</p> <p><b>Playbusters Ltd</b> £6,116 Covering 11 days business planning, governance and financial planning consultancy and on-costs together with Organisational Review costs.</p> <p><b>The Preshal Trust</b> £3,680 Covering eight days strategic planning, business planning and fundraising planning consultancy and on-costs together with Organisational Review costs.</p> <p><b>Royston Youth Action</b> £3,276 Covering six days governance and business planning implementation consultancy and on-costs.</p> <p><b>South Dennistoun Neighbourhood Centre</b> £5,320 Covering 11 days strategic planning and marketing strategy consultancy and on-costs together with Organisational Review costs.</p> <p><b>Toryglen Community Hall</b> £6,001 Covering 11 days strategic planning, business planning, marketing and fundraising consultancy and on-costs together with Organisational Review costs.</p>	<p><b>The Village Storytelling Centre</b> £5,690 Covering 11.5 days business planning, strategic planning and governance consultancy and on-costs together with Organisational Review costs.</p> <p><b>Highland</b></p> <p><b>Highland BlindCraft</b> £5,303 Covering 10 days strategic planning, business planning, financial planning and fundraising planning consultancy and on-costs together with Organisational Review costs.</p> <p><b>Lochaber Hope</b> £6,043 Covering 10 days strategic planning, resource and fundraising planning and governance consultancy and on-costs together with Organisational Review costs.</p> <p><b>Minginish Community Hall Association</b> £9,839 Covering 15 days strategic planning, governance and fundraising strategy consultancy and on-costs together with Organisational Review costs.</p> <p><b>Stornoway YMCA, known as Bridge Community Centre</b> £4,664 Covering eight days governance, business planning and fundraising strategy consultancy and on-costs together with Organisational Review costs.</p> <p><b>The Strynd Nursery</b> £6,545 Covering eight days governance and financial planning consultancy and on-costs together with Organisational Review costs.</p> <p><b>Youth Highland</b> £7,113 Covering 11 days governance, financial reporting and fundraising planning consultancy and on-costs together with Organisational Review costs.</p> <p><b>Inverclyde</b></p> <p><b>Inverclyde Advocacy Service</b> £3,320 Covering five days business planning consultancy and on-costs together with Organisational Review costs.</p> <p><b>North Lanarkshire</b></p> <p><b>Made 4U in ML2</b> £6,140 Covering 12 days governance, strategic planning and fundraising strategy consultancy and on-costs together with Organisational Review costs.</p> <p><b>South Lanarkshire</b> £3,752</p> <p><b>Haven Cancer Caring, Counselling Communication Centre</b> £3,752 Covering eight days governance, business planning and fundraising strategy consultancy and on-costs together with Organisational Review costs.</p> <p><b>Machan Trust</b> £6,250 Covering 12 days business planning, fundraising strategy and governance consultancy and on-costs together with Organisational Review costs.</p>
---	--	---	--

capacity building grants

www.itsbfoundationforscotland.org.uk  
0870 902 1201



## Partnership Drugs Initiative continued

<b>Greater Glasgow and Clyde Drug Action Team BEET Ltd</b>	<b>£20,000</b>	<b>Midlothian Drug and Alcohol Action Team Children 1st</b>	<b>£6,706</b>
Towards the salary of the Youth Alcohol Worker and associated running costs of the alcohol-free bar in the East End of Glasgow.		To continue to support the Midlothian Young Carers Project support young people providing a caring role as a result of a parental substance misuse problem.	
<b>Dumbarton Area Council on Alcohol</b>	<b>£27,250</b>	<b>Orkney Drug, Alcohol and Smoking Action Team Orkney Alcohol Counselling &amp; Advisory Service</b>	<b>£10,485</b>
Towards the running and salary costs for the Young Persons' Alcohol Service in West Dunbartonshire.		To increase the hours of the Development Worker to develop the research programme to identify the needs of young people affected by substance misuse and develop the drop-in facility.	
<b>Ruchill Youth Project</b>	<b>£9,281</b>	<b>Perth and Kinross Drug and Alcohol Action Team Barnardo's</b>	<b>£7,521</b>
To continue to support the salary and running costs of the Next Steps projects, supporting young people at risk in the Ruchill and Possilpark areas of Glasgow, conditional upon written clarification of the outcomes being achieved by young people.		To continue to support the Hopscotch project working with children living with parental/carer substance misuse problems, conditional upon written clarification on the outcomes being achieved by children.	
<b>Scottish Sports Futures</b>	<b>£14,800</b>	<b>Tayside Council on Alcohol</b>	<b>£14,606</b>
To continue to support the running costs of the Twilight Basketball programme.		Towards the salary of the full-time Children Resource Worker and running costs to offer support and advice to children and young.	
<b>Tullochan Trust</b>	<b>£59,274</b>	<b>Shetland Drug and Alcohol Action Team Shetland Community Drugs Project</b>	<b>£18,450</b>
Towards the salary and running costs for the Choices Programme in West Dunbartonshire, conditional upon written confirmation that matched funding has been secured and a detailed breakdown of costs is provided.		Towards the salary and running costs for the dedicated young people's service, conditional upon written confirmation of the procedures and processes in place to support under 16s.	
<b>Highland Drug and Alcohol Action Team NCH Scotland</b>	<b>£120,974</b>	<b>West Lothian Drug and Alcohol Action Team Circle</b>	<b>£25,000</b>
Towards the salaries and running costs of the Families in Partnership Project supporting children and families affected by substance misuse in the Highlands.		<i>formerly known as Family Service Unit Scotland</i>	
<b>NCH Scotland</b>	<b>£62,355</b>	To continue to support the salary and running costs of the Hearth Project supporting children affected by parental substance misuse in West Lothian.	
Towards the salary and running costs of the Gael Og Mentoring Project, working with vulnerable young people aged between 14 - 18, conditional upon written confirmation that matched funding has been secured.		<b>Western Isles Alcohol, Drugs and Smoking Action Team Harris Voluntary Service</b>	<b>£1,800</b>
<b>Lanarkshire Alcohol and Drug Action Team Circle</b>	<b>£74,122</b>	To continue to support the salary and running costs for the Youth Cafes.	
<i>formerly known as Family Service Unit Scotland</i>			
Towards the development of three Family Support Workers, supporting children and families affected by parental/carer substance misuse living in the North Lanarkshire area.			
<b>East Lothian Drug and Alcohol Action Team Children 1st</b>	<b>£4,187</b>		
To continue to fund the Family Support Worker to provide an outreach service to young children and families affected by substance misuse in East Lothian.			
<b>First Step Community Project</b>	<b>£11,537</b>		
Towards the salary of the Outreach Worker to support families affected by substance misuse.			

## Overseas Grants

<b>Africa</b>		<b>Link Overseas Exchange</b>	<b>£12,000</b>
<b>5th Livingston Boys' Brigade</b>	<b>£12,500</b>	Towards the salary of the Development Manager for the Scotland/Sri Lanka partnership.	
To build the disabled accommodation unit of the new school in Kerarapon, Kenya.		<b>Queen Margaret University</b>	<b>£23,056</b>
<b>Capstone Projects</b>	<b>£18,691</b>	To build local professional capacity for the psychosocial sector in Sri Lanka, by funding one year of research work by four students with local NGOs in Sri Lanka.	
Towards the renovation of four workshops, and the salaries and running costs of the skill centre in Lugazi, Uganda for one year only.		<b>Scotland's Buddhist Vihara</b>	<b>£12,300</b>
<b>Cheers Charity Scotland</b>	<b>£11,000</b>	To cover the entire running costs of the centre in Matara, South West Sri Lanka, including staff costs, to support widowed women and orphaned children to make a sustainable living.	
To buy and to ship storage containers which are converted into libraries in the suburbs of Accra, Ghana.		<b>Scottish Love in Action</b>	<b>£9,440</b>
<b>Dumbarton Churches Gambia Education Association</b>	<b>£2,468</b>	To cover the salaries of the 16 teaching staff and the Doctor in Andra Pradesh, India.	
To cover the running costs of the literacy, numeracy and IT Project benefiting 80 women and young people in the Gambia.		<b>Signpost International</b>	<b>£9,905</b>
<b>INSP Foundation</b>	<b>£22,700</b>	To cover the running costs of an education project with the Iruia people in the North East of Tamil Nadu, India.	
To support the development of a street paper in the slums of Lagos, Nigeria, involving around 200 vendors.		<b>Solas Educational Trust</b>	<b>£4,500</b>
<b>Mary Slessor Foundation</b>	<b>£13,300</b>	To cover the cost of developing and providing health education materials to non-governmental schools in Pakistan including training of local teachers.	
Towards the salaries of 10 staff in the Medical Centre at Calabar, East Nigeria for one year only.		<b>Sukhita Child</b>	<b>£7,102</b>
<b>MedicAid Africa</b>	<b>£8,919</b>	To cover upgrading of the home in Galpatha, Sri Lanka for abandoned children with learning disabilities including basic food provision and fresh water supply and the salaries of a Gardener and Administrator, closing the appeal in year one.	
To cover the salary of the Project Co-ordinator, generator running costs and monitoring and evaluation of the medical centre in Bo, Sierra Leone.		<b>Europe</b>	
<b>Ribban Children's Trust</b>	<b>£7,408</b>	<b>Children in Distress</b>	<b>£17,155</b>
To create four classrooms, two at Ribot Primary school and two at Bandit Primary School, in the Rift Valley, Kenya.		Towards the salary costs of five of the medical staff in the child development centre in Bucharest, Romania.	
<b>Scottish International Relief (SIR)</b>	<b>£13,215</b>	<b>Dumfries &amp; Galloway Action</b>	<b>£13,872</b>
To set up one new 'Mary's Meals' kitchen and sustain the feeding programme of 1,500 children in Malawi for one year only.		To cover the cost of providing medical first aid kits and training of local volunteers in 24 communities in rural North East Bosnia.	
<b>Vetaid</b>	<b>£14,200</b>	<b>Hospice of Hope Romania Limited</b>	<b>£5,943</b>
To deliver camel milk processing training to 10 women's groups in Somalia, bringing benefits to 150 families.		To fund the exchange project involving three hospice staff from Romania.	
<b>Asia</b>		<b>Lydia Project Limited</b>	<b>£8,000</b>
<b>Challenges Worldwide</b>	<b>£20,241</b>	To support the Miriam Project involving capacity building and organisational support of five projects in Eastern Europe, closing the appeal.	
Towards the salary of the Volunteer Recruitment Co-ordinator.			
<b>Charity Education International</b>	<b>£34,715</b>		
To cover salaries and programme costs of the three projects in Bangladesh.			
<b>Community Business Scotland Network Ltd</b>	<b>£19,968</b>		
To support capacity building programmes in 20 tribal villages in Southern Rajasthan, India.			
<b>Guide Association Scotland</b>	<b>£11,500</b>		
To support 21 people on three visits to Ghana for evaluation, training delivery and project work, closing the appeal.			



## Staff Matched Giving Scheme continued

Royal National Institute for the Blind	£1,165
Royal National Lifeboat Institution (RNLI)	£2,038
Samaritans - Edinburgh & Lothian	£1,000
Samaritans of Kilmarnock & Ayrshire	£500
SANDS Lothians	£350
Scottish Association for Mental Health	£190
The Scottish Council The Scout Association	£500
Scottish Episcopal Church Nominees	£500
Scottish Heart At Risk Testing (The Cameron Gunn Memorial Fund)	£500
Scottish Huntington's Association	£79
Scottish Motor Neurone Disease Association	£250
Scottish Spina Bifida Association	£2,500
Sense Scotland	£500
Simpsons Special Care Babies	£1,000
Solid Rock Support Centre	£500
South East District Scout Council	£250
SSAFA Forces Help	£500
St Andrew's Ambulance Association	£915
St Andrew's Hospice	£500
St Columba's Hospice	£1,500
St Vincent de Paul Society	£120
Stepping Stones Playgroup	£500
Strathaven Parent & Toddler Group	£500
Strathcarron Hospice	£180
Strichen Gala Fund	£500
Strichen Playgroup	£500
Tayside Children with Cancer & Leukaemia	£400
Tayside Kidney Patients Association	£125
Thornton Rose Riding for the Disabled	£250
TOFS	£537
Walk the Walk Worldwide	£7,730
Wardie Nursery	£500
Whitecraig Community Centre Association	£500
Yellow Teapot Club	£400
Yorkhill Children's Foundation	£1,242
YWCA Scotland	£65



A pupil drawing water from a spring at a school in Kenya supported by the Ribban Children's Trust

## Your Views Count

**Everyone at the Foundation – staff and Trustees – does their best to make it as easy as possible for charities to get help and advice on our different award programmes.**

Of course, the people who know how well this is working are the people from the charities who contact us. If there are things you think we could do better or that you think work well as they are, please let us know. This won't prejudice any applications you make to us, but it will help us do even better in the future. charities.

Lloyds TSB Foundation for Scotland  
Riverside House, 502 Gorgie Road,  
Edinburgh EH11 3AF  
T: 0870 902 1201 F: 0870 902 1202  
enquiries@ltsbfoundationforscotland.org.uk

A Charitable Company Limited by Guarantee  
Registered in Scotland No 96068  
Scottish Charity Index No SC009481  
A member of the Scottish Grant Making Trusts Group  
A member of the Association of Charitable Foundations

If you would find it easier to read this document in an alternative format please contact the Foundation on 0870 902 1201.



at the heart of funding  
Scotland's charities

www.ltsbfoundationforscotland.org.uk  
0870 902 1201

At the heart of funding  
Scotland's charities

2007-2008 Annual Review